



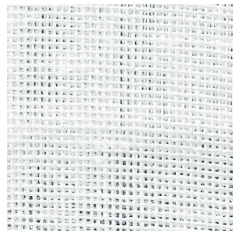
Almelin II 100216-0027

*Almelin is a true Almedahls classic. The surface is created by the intricate blend of linen and polyester which gives the fabric its soft handle and natural, vivid look. Almelin II has a slightly softer upgraded colour palette with many options for the contemporary environment. The extra 330 cm width offers the option to hang the fabric railroaded for seamless installations.*

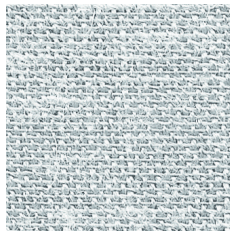
**We thought you'd like...**

- the look and handle of a transparent linen texture
- the width of 330 cm
- the upgraded colour range

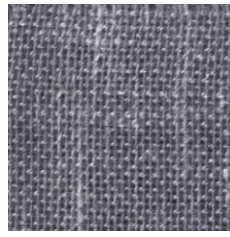
hanging textile **Almelin II** 100216



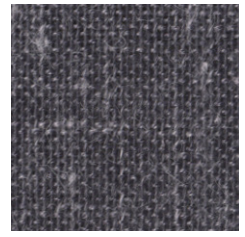
0008



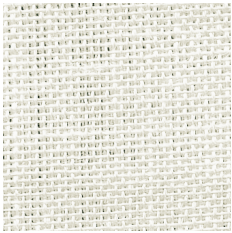
0005



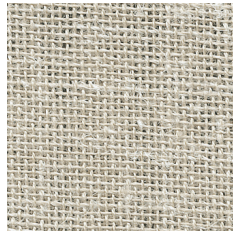
0027



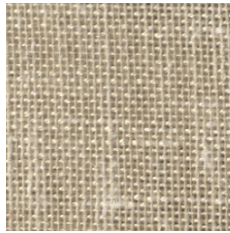
0059



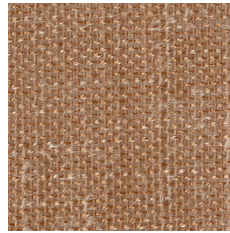
0065



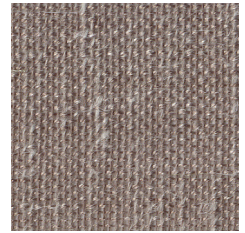
0006



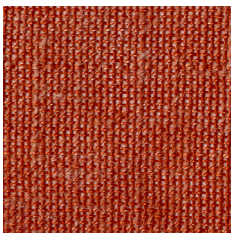
0860



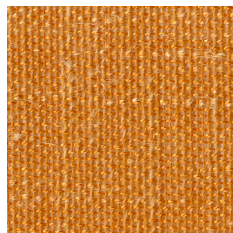
0610



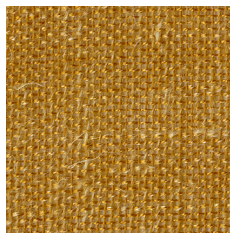
0710



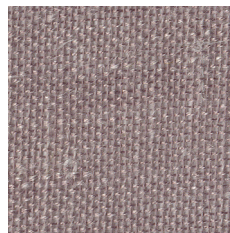
0110



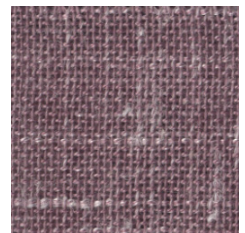
0400



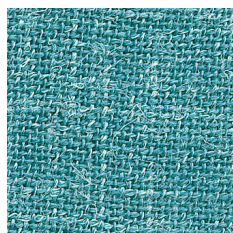
0460



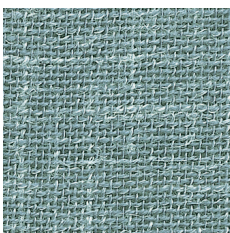
0700



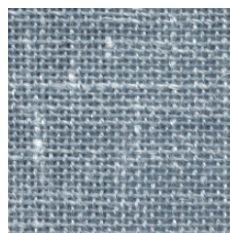
0700



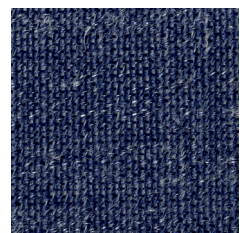
0023



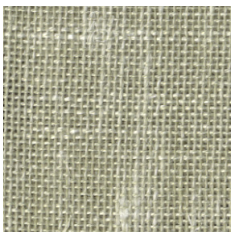
0025



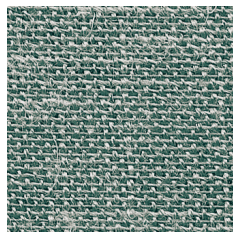
0028



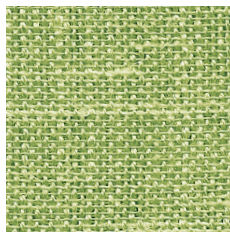
0020



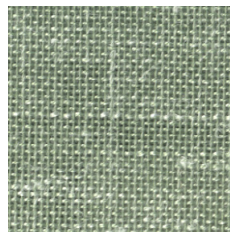
0053



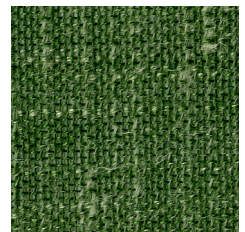
0055



0033




0030



0390

## Product Specification

---

Designer	Almedahls Design Studio
Material	75% Polyester, 25% Flax
Light transmission	Transparent
Repeat	-
Width	330 cm, 130 inch
Weight	130 g/m <sup>2</sup> , 3,8 oz/yd <sup>2</sup>
Light fastness SS-EN ISO 105-B02 (scale 1-8)	4-6
Colour fastness to laundering SS-EN ISO 105-C06 (scale 1-5)	4-5
Shrinkage SS-EN ISO 6330+A1	<2%
Care instructions	 Can be washed in 70°C
Ökotex	Yes
Certificates	SS-EN ISO 14001:2004
Other info	Can be used railroded to create a 3 m drop