



Elektra 100159-0037

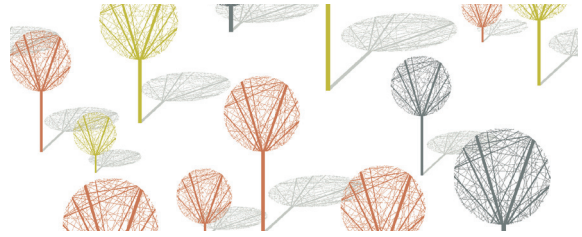
*Elektra is a design by Jenny Stefansdotter Stentoft. The design has an abstract, modern touch which sparks the imagination. The pattern resembles an imaginary sunlit park with strict tree shapes. The intricate, decorative trees with shadows behind them creates extra depth to the curtain. The colour-ways are versatile, ranging from graphic white and black to a variation of multi-coloured options.*

**We thought you'd like...**

- the intriguing tree pattern
- the versatile colour scheme
- the transparency and texture of the fabric filtering light in a beautiful way



0008



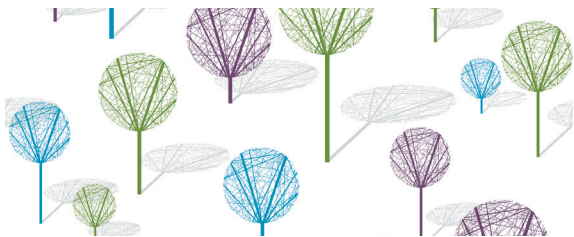
0014



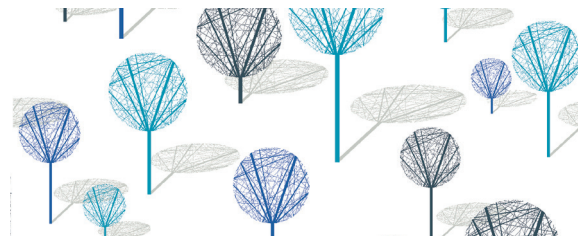
0100



0065



0037







0002



0009

## Product Specification

Design	Jenny Stefansdotter Stentoft
Material	100% Polyester Trevira CS 
Light transmission	Transparent
Repeat	90 cm, 35,5 inch
Width	140 cm, 55 inch
Weight	140 g/m <sup>2</sup> , 4,1 oz/yd <sup>2</sup>
Light fastness SS-EN ISO 105-B02 (scale 1-8)	5-6
Colour fastness to laundering SS-EN ISO 105-C06 (scale 1-5)	4-5
Shrinkage SS-EN ISO 6330+A1	< 2%
Care instructions	 Can be washed in 70°C
Fire resistance standard	IMO part 7 
Sound Class SS-EN ISO 354	E
Alfa Value	0,15
Ökotex	Yes 
Certificates	SS-EN ISO 14001:2004