



Feather 100160-0009

*Feather is a light yet expressive design created by interior architect and designer Maria Löw. The large scale pattern has an organic flow where the flower-like shapes seems to be gently drifting from one edge to the other while slowly dissolving. Feather is printed on a smooth satin weave with a subtle lustre, which enhances the colours in a beautiful way. The dense, fabric provides privacy and features good sound absorption and light reflecting properties.*

#### We thought you'd like...

- the dense fabric providing privacy and light reflection
- the both striking and light design
- the sound absorption properties



0056



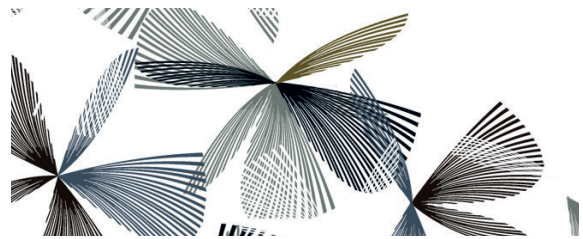
0003



0014







0002



0009

## Product Specification

---

Design	Almedahls Design Studio
Material	100% Polyester Trevira CS 
Light transmission	Translucent
Repeat	63 cm 24,8 inch
Width	140 cm, 55 inch
Weight	190 g/m <sup>2</sup> , 5,6 oz/yd <sup>2</sup>
Light fastness SS-EN ISO 105-B02 (scale 1-8)	5-6
Colour fastness to laundering SS-EN ISO 105-C06 (scale 1-5)	4-5
Shrinkage SS-EN ISO 6330+A1	<2%
Care instructions	 Can be washed in 70°C
Fire resistance standard	IMO part 7 
Sound Class SS-EN ISO 354	C
Alfa Value	0,6
Ökotex	Yes 
Certificates	SS-EN ISO 14001:2004
Other info	The turnable pattern provides possibility to create a valance