



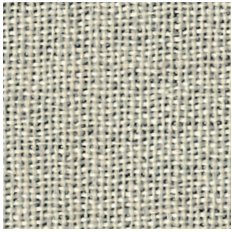
Moon 101603

*Moon is a dimout with coarse natural texture at the front of the fabric while the back is smooth with a slight lustre. The fabric has a soft and heavy drape. The width of the fabric offers the possibility of using it railroaded to create seamless hanging in large windows. Apart from the room darkening function, the fabric also have good sound absorption properties. Moon comes in a mix of six versatile neutrals perfect for a calm and natural setting.*

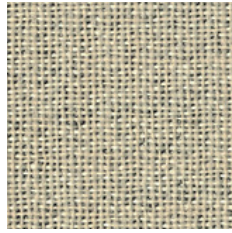
**We thought you'd like...**

- a dimout fabric with a textured surface
- the 300 cm wide fabric
- the muted, natural palette, part of the colour co-ordinated Texture Concept

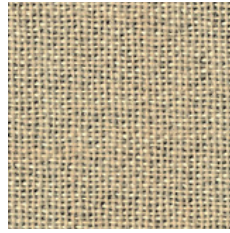




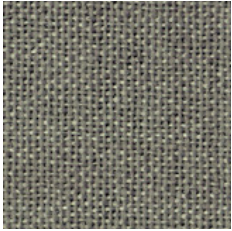
0083



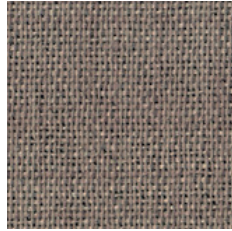
0008



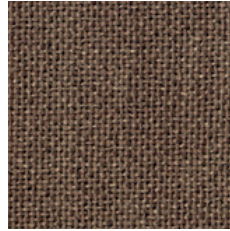
0084



0055



0065



0066



The finely curated Texture Concept celebrates the diversity of woven textiles. The concept provides endless possibilities of combining exquisite textures with different expressions; from delicate, sheer mesh and coarse mélanges to smooth velvet and dense dim-outs, for any room.

The timeless textures, which all drape beautifully, are arranged into colour families making it easy to find the right shade and light filtering property for your project.

The textures (from top):

Harvest

Rye


Earth

Fairy

Moon

Velvet

## Product Specification

Design	Almedahls Design Studio
Material	100% Polyester FR
Light transmission	Dimout
Repeat	-
Width	300 cm, 118 inch
Weight	285 g/m <sup>2</sup> , 8,4 oz/yd <sup>2</sup>
Light fastness SS-EN ISO 105-B02 (scale 1-8)	3-4
Colour fastness to laundering SS-EN ISO 105-C06 (scale 1-5)	3-4
Shrinkage SS-EN ISO 6330+A1	Max 2%
Care instructions	
Fire resistance standard	Classe 1, TEST UNI9177
Sound Class SS-EN ISO 354	C
Alfa Value	0,7
Certificates	SS-EN ISO 14001:2004
Other info	Turnable design. Can be used railroaded to create a 3 m drop