

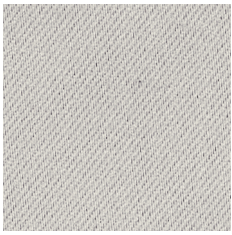


Uni 100132-0055

Uni has a smooth and even surface with a subtle, shiny lustre. The fabric has a soft and heavy drape. The width of the fabric offers the possibility of using it railroaded to create seamless hanging in large windows. Apart from the excellent dimout function, the fabric also have a good sound absorption value- sound class C. Uni comes in a useful selection of versatile neutrals with an addition of the two colours, a dark blue and a classic red.

We thought you'd like...

- the smooth surface and heavy drape
- the good sound absorption properties
- the 3 m width perfect for seamless hanging i large windows



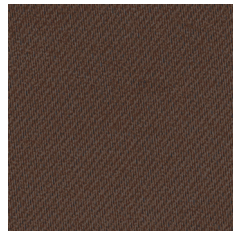
0085



0886



0448



0665



0667



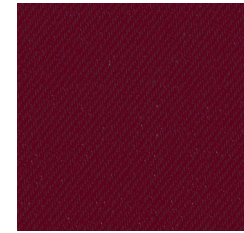
0056



0009








0029



0011

Product Specification

Design	Almedahls Design Studio
Material	100% Polyester FR
Light transmission	Dimout
Repeat	-
Width	300 cm, 118 inch
Weight	260 g/m ² , 7,7 oz/yd ²
Light fastness SS-EN ISO 105-B02 (scale 1-8)	5-6
Colour fastness to laundering SS-EN ISO 105-C06 (scale 1-5)	4-5
Shrinkage SS-EN ISO 6330+A1	<2%
Care instructions	     Can be washed in 70°C
Fire resistance standard	B1, M1, IMO part 7
Sound Class SS-EN ISO 354	C
Alfa Value	0,65
Ökotex	Yes
Certificates	SS-EN ISO 14001:2004
Other info	Turnable fabric. Can be used railroaded for seamless hanging.