



Wide 100217- 0039 / 100217- 0033

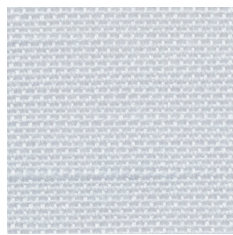
*Wide is an unpretentious and versatile base fabric. A wide colour range on a fabric that is extra wide will do the making of a room easy. The amount of colours makes it possible to create soft and serene areas as well as more intense and vital interiors. The transparent and slightly textured fabric brings life to the expression.*

**We thought you'd like...**

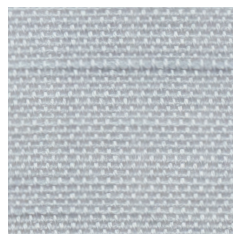
- the extra wide fabric suitable for large windows and as a room divider
- the transparency and the structure
- the wide colour palette that can create almost any character of a room setting



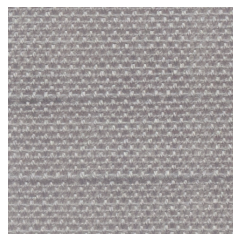
0080



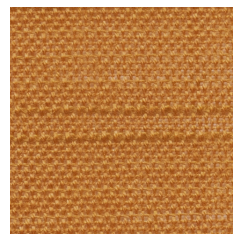
0050



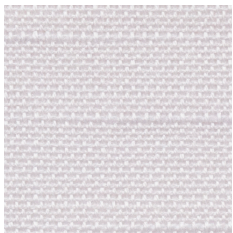
0055



0059



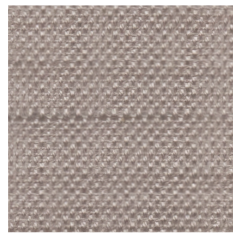
0046



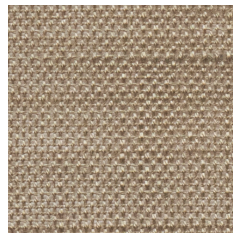
0060



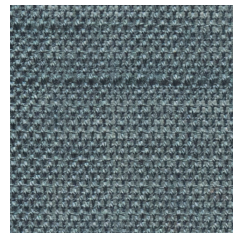
0066



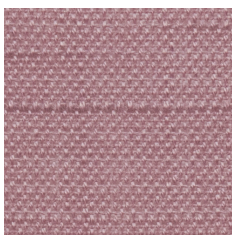
0065



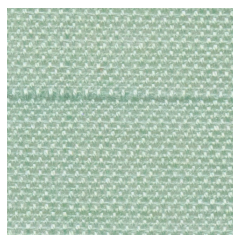
0069



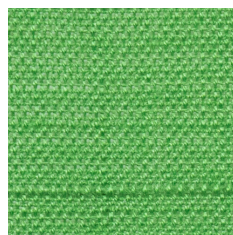
0090



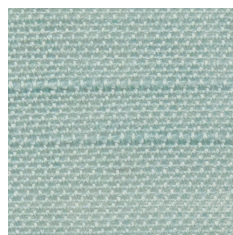
0070



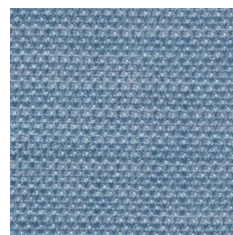
0039



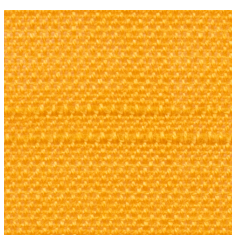
0033



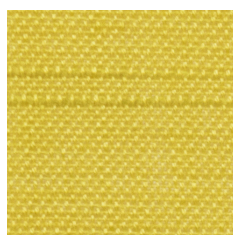
0082



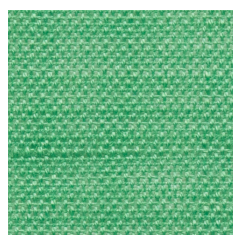
0020



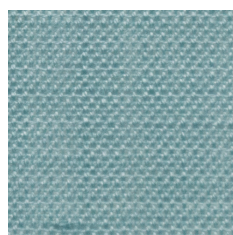
0040



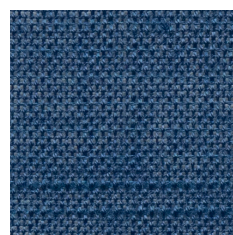
0034



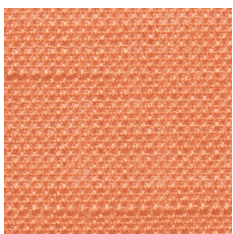
0023



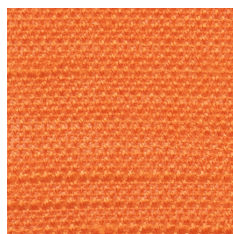
0032



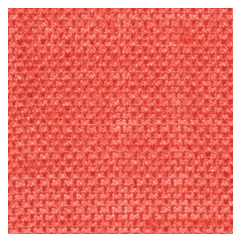
0022



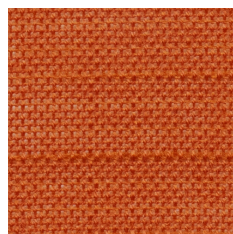
0016



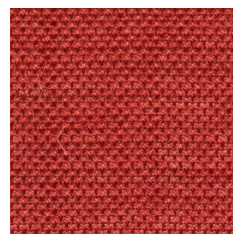
0041



0011









0014



0017

## Product Specification

---

Design	Almedahls Design Studio
Material	100% Polyester Trevira CS 
Light transmission	Transparent
Repeat	-
Width	340 cm, 134 inch
Weight	130 g/m <sup>2</sup> , 4,5 oz/yd <sup>2</sup>
Light fastness SS-EN ISO 105-B02 (scale 1-8)	6 - 7
Colour fastness to laundering SS-EN ISO 105-C06 (scale 1-5)	4 - 5
Shrinkage SS-EN ISO 6330+A1	<2%
Care instructions	     Can be washed in 70°C
Fire resistance standard SS-EN 1021-1:2014	Classe 1
Certificates	SS-EN ISO 14001:2004
Other info	Can be used railroaded to create a 3 m drop