



Inspiro 101851-0006

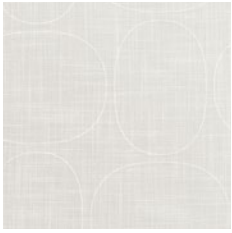
*INSPIRO offers a delicate openness that invites serenity with an organic but definite pattern that flows along the fabric.*

*The pattern is based on the shapes of 5:6 & 4:6 Superellipse® which constructs a regularity. The rhythm is directed by the folding of the textile. It is like a creative process of endless exploring, cited in an elegant and contemporary design.*

*The design of the texture, the pattern and transparency create an inspirational play of highlights and shadows. It reminds us of the unique angles of the Nordic light whilst the colour range mirrors scenes from Nordic nature. The openness of the textile inspires a feeling of being at ease and to connect.*

#### **We thought you'd like...**

- the serenity of the design giving a tranquil feeling to the surroundings
- the delicate filtering of the light
- the soft neutral colours



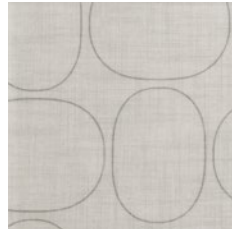
0008



0006



0061









0005



0003

## Product Specification

---

Design	Piet Hein by Almedahls
Material	100% Polyester Trevira CS
Light transmission	Transparent
Repeat	21 cm, 8,2 inch
Width	140 cm, 55 inch
Weight	140 gr/m <sup>2</sup> , 4,1 oz/yd <sup>2</sup>
Light fastness SS-EN ISO 105-B02 (scale 1-8)	4-5
Colour fastness to laundering SS-EN ISO 105-C06 (scale 1-5)	4-5
Shrinkage SS-EN ISO 6330+A1	<2%
Care instructions	     Can be washed in 70°C
Fire resistance standard	IMO part 7 
Sound Class SS-EN ISO 354	E
Alfa Value	0,15
Ökotex	Yes
Certificates	SS-EN ISO 14001:2004
Other info	Turnable design