



Rango 100191-0032

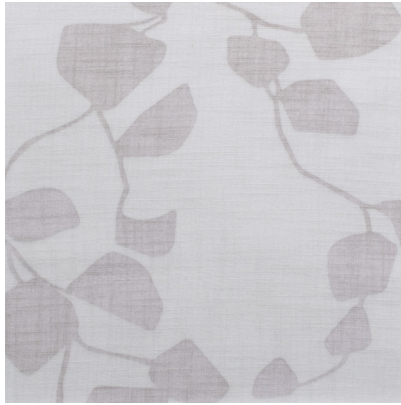
*Rango, a long time favourite in the Almedahls collection, has now a re-invented colour scheme. The deep brilliance of gemstones together with earthy shades and plant colours set the tone for the new palette, created by Jenny Stefansdotter Stentoft. The slightly subdued hues merged with the coloured background creates a calm addition to the spirited colour scale of the original version. The flowy, growing foliage pattern interacts beautifully with delicate fabric texture. Rango is perfect to combine with our plain curtain fabrics in 3 m width and is also matched with the recently updated line texture Dagg.*

#### **We thought you'd like...**

- a pattern with a soft tonal colour effect
- the versatile colour concept
- the delicate light filtering properties



0008



0056



0046



0044



0014



0001



0017



0002



0025



0005



0003





0033



0032



## Product Specification

Design	Jenny Stefansdotter Stentoft
Material	100% Polyester Trevira CS
Light transmission	Transparent
Repeat	90 cm, 35,5 inch
Width	140 cm, 55 inch
Weight	140 g/m <sup>2</sup> , 4,1 oz/yd <sup>2</sup>
Light fastness SS-EN ISO 105-B02 (scale 1-8)	6
Colour fastness to laundering SS-EN ISO 105-C06 (scale 1-5)	4-5
Shrinkage SS-EN ISO 6330+A1	< 2%
Care instructions	 Can be washed in 70°C
Fire resistance standard	IMO part 7 
Sound Class SS-EN ISO 354	E
Alfa Value	0,15
Ökotex	Yes
Certificates	SS-EN ISO 14001:2004