

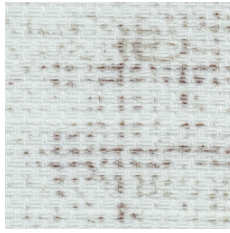


Ramie 101855-0041

When creating **Ramie** our designers explored the moods of the seasons in our natural habitat, the Nordic landscape. Taking inspiration from the layers of nature, of scents, temperatures, sounds, textures, light and colours. The result is a true celebration of craft, material and tactility. The timeless, textural Ramie print is intricately combined with the linen-like fabric structure, creating a layering effect that amplifies the materiality of the design.

The colour palette includes soft, melancholic pastels inspired by the circularity of the seasons. The blend of three thoughtfully combined colours in each colourway gives several possibilities to match with other curtains from the Almedahls curtain collection.

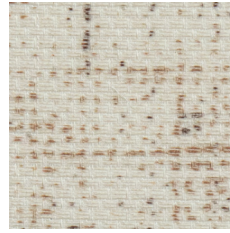
The base fabric is made of 75% recycled polyester from post-consumer PET-bottles and post-industrial fibre waste which significantly reduces water and energy consumption and greenhouse gas emissions in the manufacturing process.



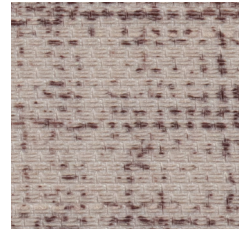
0086



0041



0061



0018



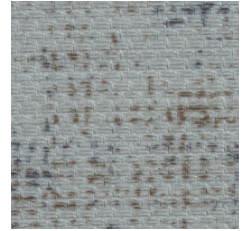
0064



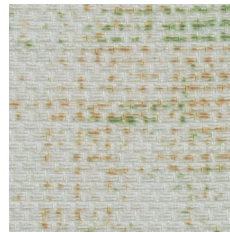
0025



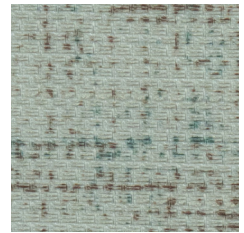
0062



0026








0043



0035

Product Specification

Design	Almedahls Design Studio
Material	75% Recycled Polyester 25% Polyester FR
Light transmission	Transparent
Openess factor	7%
Repeat	-
Turnable design	Yes
Width	300 cm, 118 inch
Weight	215 g/m ² , 6,3 oz/yd ²
Light fastness SS-EN ISO 105-B02 (scale 1-8)	5 - 6
Colour fastness to laundering SS-EN ISO 105-C06 (scale 1-5)	4 - 5
Shrinkage SS-EN ISO 6330+A1	< 2%
Care instructions	     Can be washed in 70°C
Fire resistance standard	DIN 4102 B1
Sound Class SS-EN ISO 354	D
Alfa Value	0,30
Sustainability profile	Ökotex Five Zero Green SS-EN ISO 14001:2004
Other info	Can be used railroaded to create a 2,75 m drop