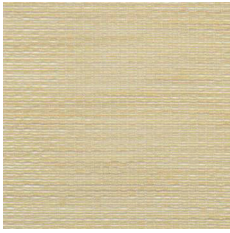




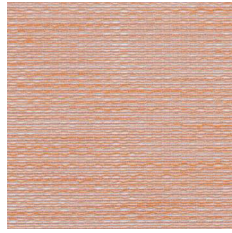
Note 101900-0048/-0064/0030

***Note** is ethereal and transparent, thin as gauze, but still full of character. The cross-weave with twisting threads creates the delicate net texture. Even though the fabric is completely see-through it adds a certain atmosphere. The shimmering surface brings a beautiful play with light. A two-coloured effect yarn in the weft, creates a shifting expression depending on the light conditions. Note is the perfect sheer for windows where lots of light is required to come into the room, or used as a subtle room divider when remaining contact with the surroundings is desired.*

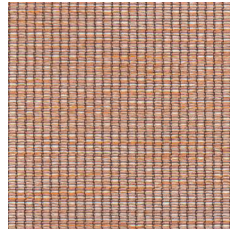
*The colour palette is characterized by a sophisticated Nordic elegance, a composition of neutrals, soft pastels, and an intense blue and a deep forest green for contrast. Note is carefully coordinated with the lush and elegant diagonal texture Tilt bringing possibilities to create inspiring interiors by layering colours and functions.*



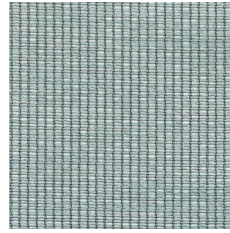
0046



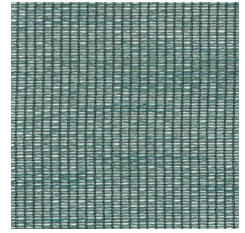
0048



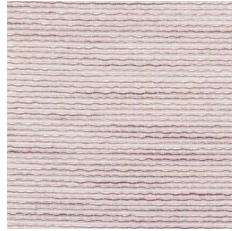
0064



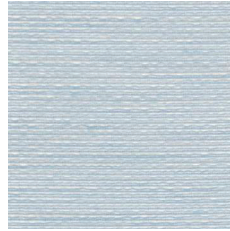
0035



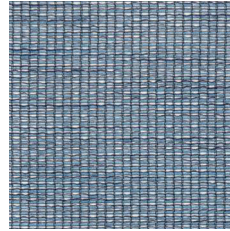
0030



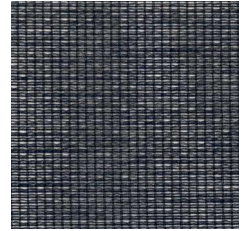
0078



0028



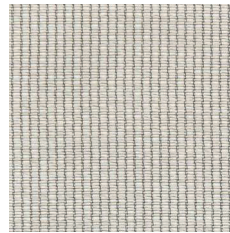
0022



0029



0066








0056



0009

## Product Specification

Design	Almedahls Design Studio
Material	100% Polyester Trevira CS
Light transmission	Transparent
Openess factor	26%
Repeat	-
Turnable design	Yes
Width	312 cm, 122 inch
Weight	75 g/m <sup>2</sup> , 2,2 oz/yd <sup>2</sup>
Light fastness SS-EN ISO 105-B02 (scale 1-8)	6
Colour fastness to laundering SS-EN ISO 105-C06 (scale 1-5)	4 - 5
Shrinkage SS-EN ISO 6330+A1	< 2%
Care instructions	     Can be washed in 70°C
Fire resistance standard	NFP 92-503/504/505/507-M1 DIN 4102-B1 EN13773 BS 5867 Part 2C NFPA 701:2010 Classe Uno
Sound Class SS-EN ISO 354	-
Alfa Value	0,10
Sustainability profile	Oeko-tex Five Zero Green SS-EN ISO 14001:2004
Other info	Can be used railroaded to create ≈ 2,85 m drop.

Please note the direction of the fabric. Appearance will slightly change when the fabric is turned.