

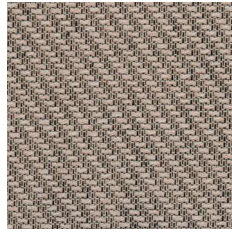


Tilt 101901-0043/-0009

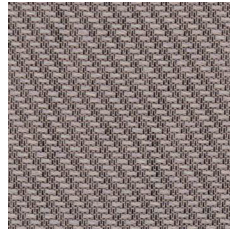
***Tilt** is a rich and stylish twill-texture with a slight vintage feel. Yet it is modern and cool adding a distinct character to contemporary environments. The loose, lush weave has a light transparency and an exquisite soft drape. The tactile surface brings a warm energy to the surroundings..*

*Tilt comes in twelve colours including muted pastels, dark more intense hues and versatile neutrals. The two-toned stripe effect, created by blending three different yarn colours, makes each colourway easy to match with the other colours within the Tilt palette and with other elements in the interior. Although the shades are soft and muted the fabric is still carrying a strong attitude. Tilt brings the perfect balance between playfulness and elegance.*

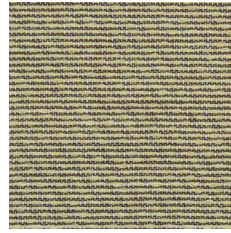
*Tilt is carefully co-ordinated with our delicate net texture Note, offering possibility to create intriguing interiors by layering function, textures and colours.*



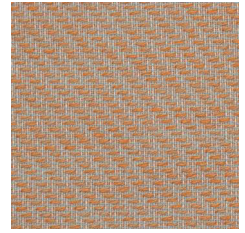
0015



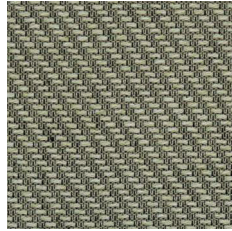
0075



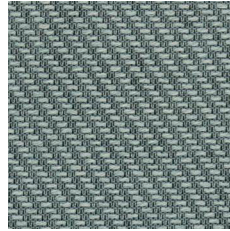
0046



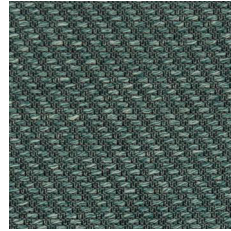
0048



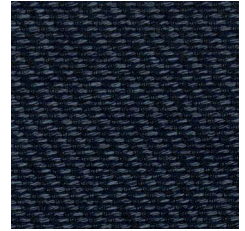
0043



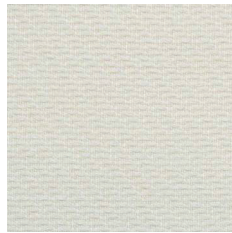
0035



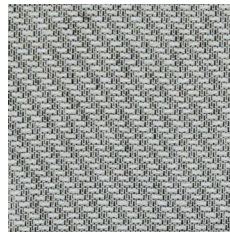
0032



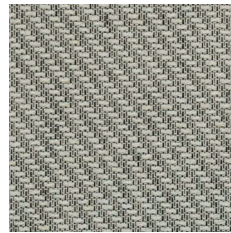
0022



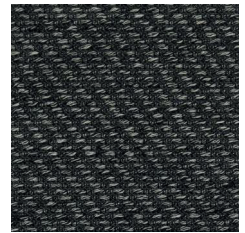
0008



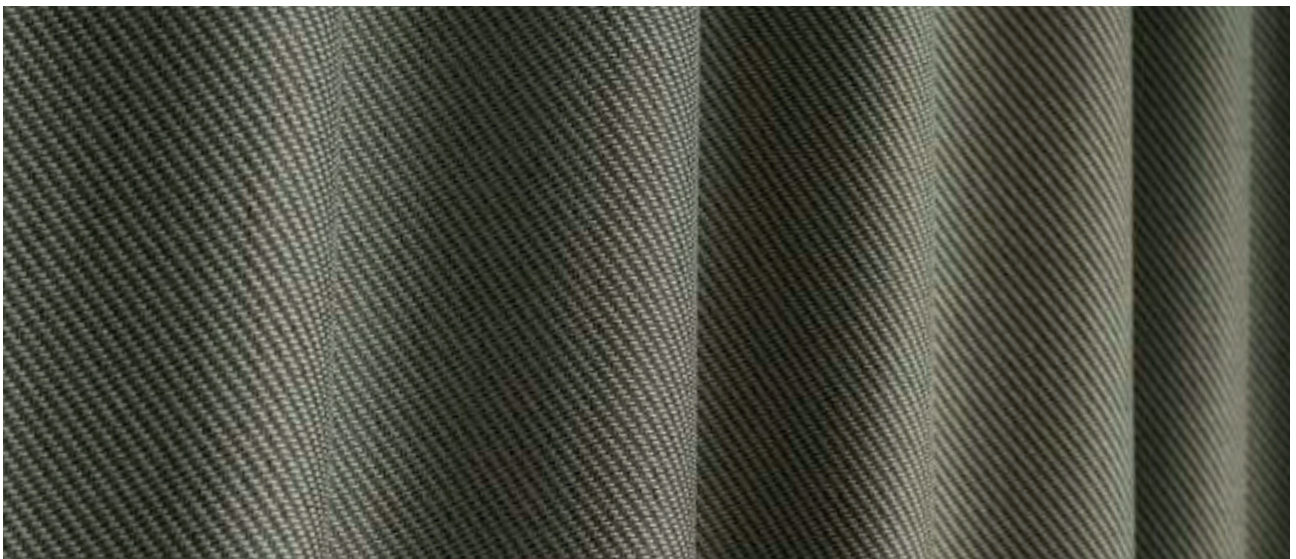
0055



0056




0009



*Close up Tilt 101901-0043*

## Product Specification

Design	Almedahls Design Studio
Material	100% Polyester Trevira CS
Light transmission	Transparent
Openess factor	3%
Repeat	-
Turnable design	Yes
Width	310 cm, 122 inch
Weight	205 g/m <sup>2</sup> , 6 oz/yd <sup>2</sup>
Light fastness SS-EN ISO 105-B02 (scale 1-8)	6
Colour fastness to laundering SS-EN ISO 105-C06 (scale 1-5)	4 - 5
Shrinkage SS-EN ISO 6330+A1	< 2%
Care instructions	 Can be washed in 70°C
Fire resistance standard	NFP 92-503/504/505/507-M1 DIN 4102-B1 EN13773 BS 5867 Part 2C NFPA 701:2010 Classe Uno
Sound Class SS-EN ISO 354	D
Alfa Value	0,35
Sustainability profile	Oeko-tex Five Zero Green SS-EN ISO 14001:2004
Other info	Can be used railroaded to create ≈ 2,80 m drop.

Please note the direction of the fabric. Appearance will slightly change when the fabric is turned.