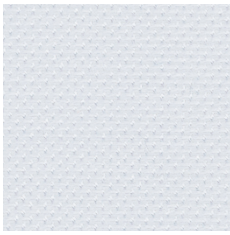




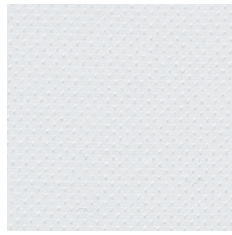
*Shade is a light and fluid hanging textile with fresh, clean look. Its 330 cm width ensures seamless hanging as a room divider or in front of large windows. The fabric has a subtle lustre, drapes well and filters the light beautifully. A shimmering, almost iridescent effect, is created by the combination of different colours in warp and weft. The tonal palette makes it easy to combine various nuances. Shade is also great to co-ordinate with our 310 cm wide, translucent, hanging textile Panorama II, which is denser, but have the same kind of colour effect, to create a functional and harmonious atmosphere in any setting.*

**We thought you'd like...**

- the beautiful light filtering properties
- the 330 cm width which ensures seamless hanging as room divider or in large window areas
- the wide colour range including 40 elegant shades
- the fabric is delivered with weight tape



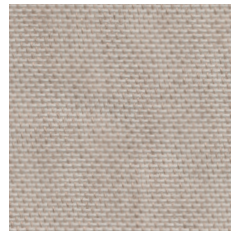
0188



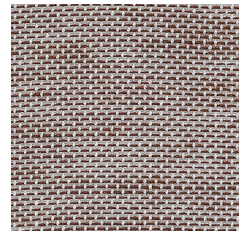
0186



0184



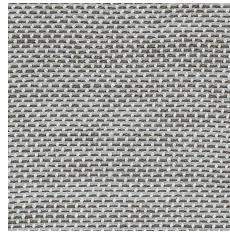
0168



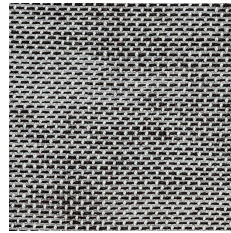
0106



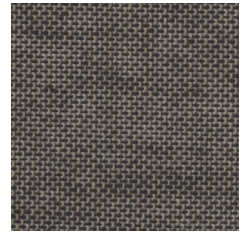
0158



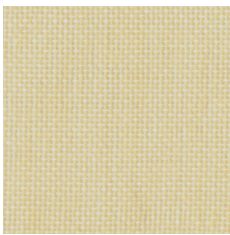
0105



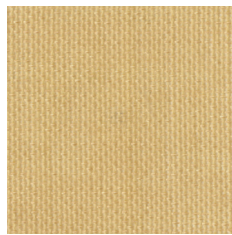
0159



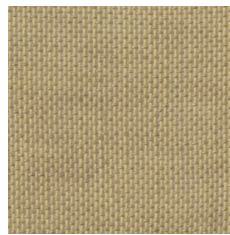
0169



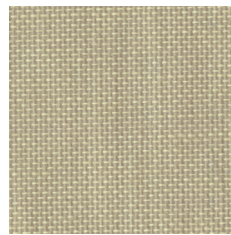
0140



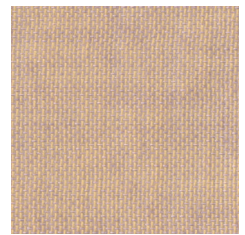
0141



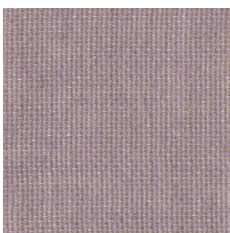
0142



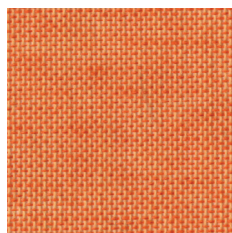
0145



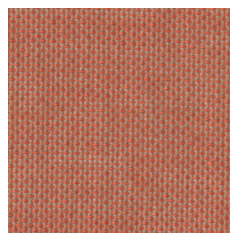
0147



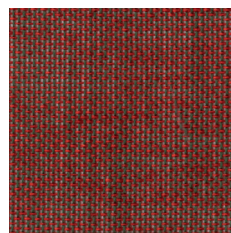
0151



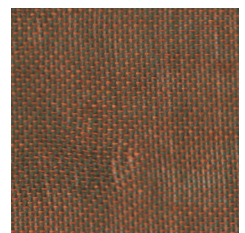
0144



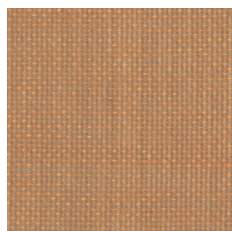
0146



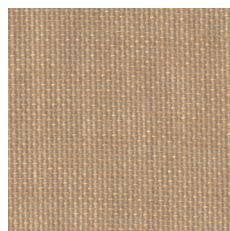
0113



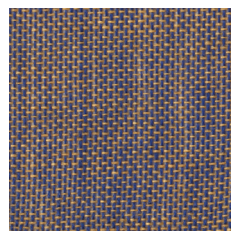
0143



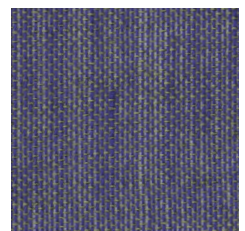
0160



0164

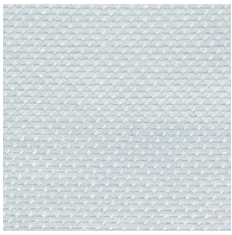


0124

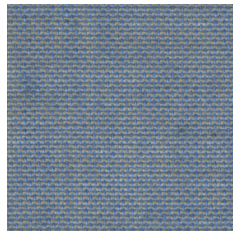


0126

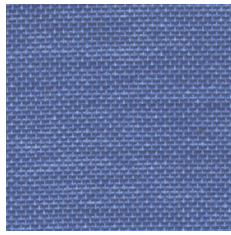




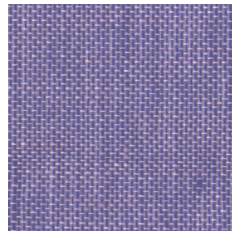
0128



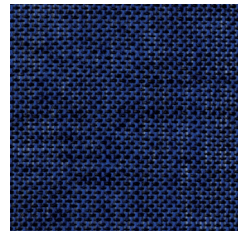
0125



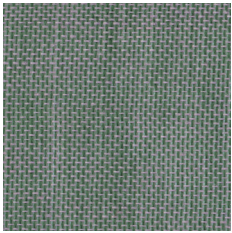
0122



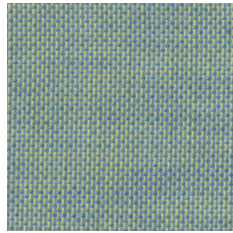
0121



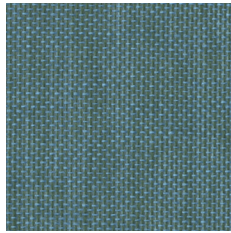
0129



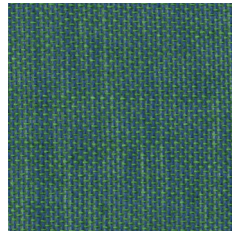
0131



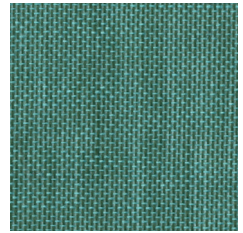
0162



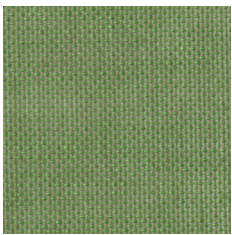
0120



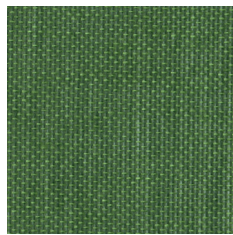
0123



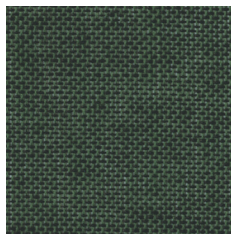
0132



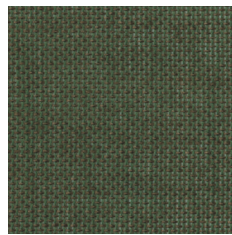
0130



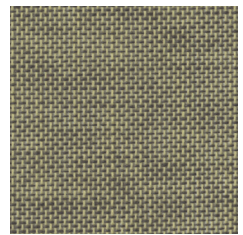
0133



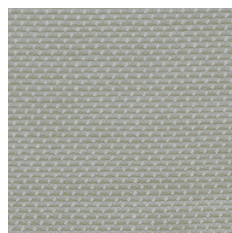
0139



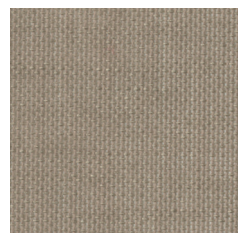
0163



0154





0136



0165

## Product Specification

Design	Almedahls Design Studio
Material	100% Polyester Trevira CS 
Light transmission	Transparent
Repeat	-
Width	330 cm, 130 inch
Weight	90 g/m <sup>2</sup> , 2,7 oz/yd <sup>2</sup>
Light fastness SS-EN ISO 105-B02 (scale 1-8)	4-6
Colour fastness to laundering SS-EN ISO 105-C06 (scale 1-5)	4-5
Shrinkage SS-EN ISO 6330+A1	Max 2%
Care instructions	 Can be washed in 70°C
Fire resistance standard	DIN 4102-B1 M1- NFP 92-503, 92-505, 92-507
Ökotex	Yes
Certificates	SS-EN ISO 14001:2004
Other info	Can be used railroaded to create a 3 m drop This fabric is delivered with weight tape