



Shine 101215-0014

*Shine is a wide, ultra sheer weave with a discreet texture. The slightly shiny lustre catches the light in a beautiful way and elevates its presence in the room. The airy fabric has a lovely floaty movement. It is unpretentious and flexible, suited for many applications. The versatile colour scheme ranges from muted naturals of beige and grey to lively, vibrant tones as, sunny yellow, tangerine and ocean blues, all which are transformed to lofty pastel hues when transmitting light.*

**We thought you'd like...**

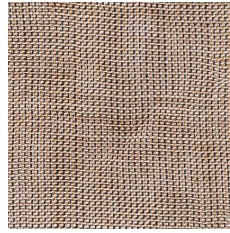
- the lustrous weave carrying the light beautifully
- the floating movement of the fabric
- the 330 cm wide fabric providing seamless hanging in large scale windows
- the fabric is delivered with weight tape



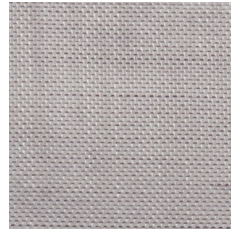
0086



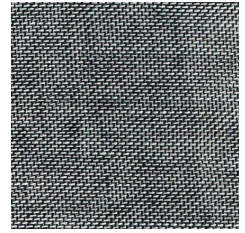
0068



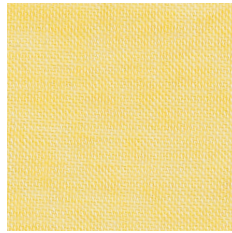
0006



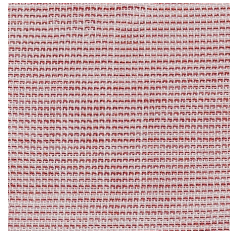
0005



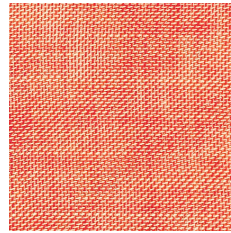
0059



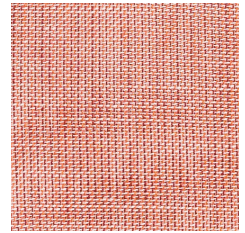
0004



0015



0014



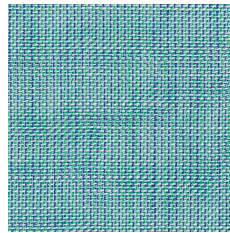
0011



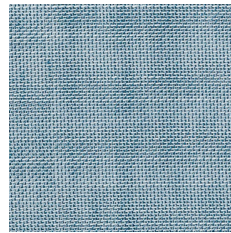
0036



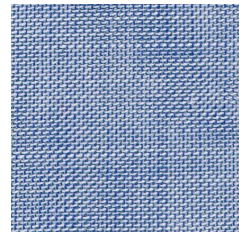
0038



0023





0032



0002

## Product Specification

Design	Almedahls Design Studio
Material	100% Polyester Trevira CS 
Light transmission	Transparent
Repeat	-
Width	330 cm, 130 inch
Weight	50 g/m <sup>2</sup> , 1,5 oz/yd <sup>2</sup>
Light fastness SS-EN ISO 105-B02 (scale 1-8)	4-6
Colour fastness to laundering SS-EN ISO 105-C06 (scale 1-5)	4-5
Shrinkage SS-EN ISO 6330+A1	<2%
Care instructions	 Can be washed in 70°C
Fire resistance standard	DIN 4102 (B1) NFP 92-503, 92-505, 92-507 (M1)
Ökotex	Yes
Certificates	SS-EN ISO 14001:2004
Other info	Can be used railroaded to create a 3 m drop This fabric is delivered with weight tape