



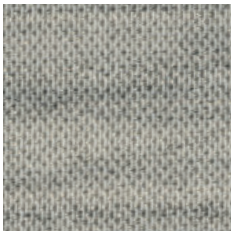
Earth 101604-0036

*Earth is a sophisticated textile with a timeless expression. The warm ambiance and subtle lustre reminds of a classic wool curtain. The weave has a fine texture and a tonal mélange effect in the weft direction. The drape is soft and elegant. Earth has a limited, but versatile colour palette of muted, slightly tinted neutrals easy to adapt in many environments. The 330 cm wide fabric is perfect for creating large scale seamless curtain applications.*

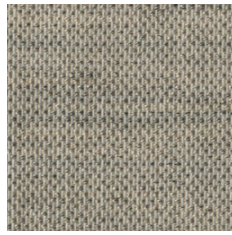
**We thought you'd like...**

- the subtle, tonal mélange effect
- the versatile 330 cm wide fabric
- the muted, natural palette, part of the colour co-ordinated Texture Concept

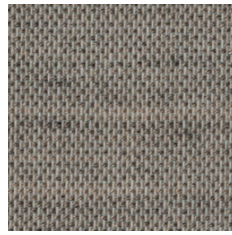
↑ Warp direction



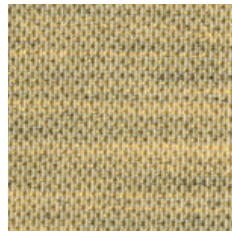
0085



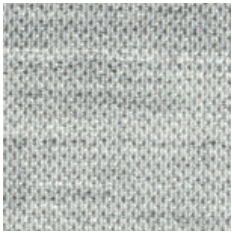
0060



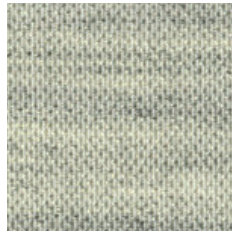
0065



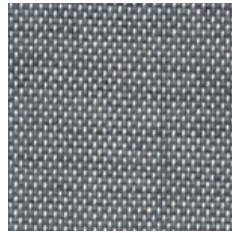
0045



0025



0035



0022



The finely curated Texture Concept celebrates the diversity of woven textiles. The concept provides endless possibilities of combining exquisite textures with different expressions; from delicate, sheer mesh and coarse mélanges to smooth velvet and dense dim-outs, for any room.



The timeless textures, which all drape beautifully, are arranged into colour families making it easy to find the right shade and light filtering property for your project.

The textures (from top):

- Harvest
- Rye
- Earth
- Fairy
- Moon
- Velvet

## Product Specification

---

Design	Almedahls Design Studio
Material	100% Polyester Trevira CS 
Light transmission	Transparent
Repeat	-
Width	330 cm, 130 inch
Weight	165 g/m <sup>2</sup> , 4,8 oz/yd <sup>2</sup>
Light fastness SS-EN ISO 105-B02 (scale 1-8)	5
Colour fastness to laundering SS-EN ISO 105-C06 (scale 1-5)	4
Shrinkage SS-EN ISO 6330+A1	Max 2%
Care instructions	 Can be washed in 70°C
Fire resistance standard	DIN 4102-B1
Sound class ISO 354	E
Alfa Value	0,20
Certificates	SS-EN ISO 14001:2004
Other info	Can be used railroaded to create a 3 m drop. Please note the direction of the fabric. Appearance will change when fabric is turned.