

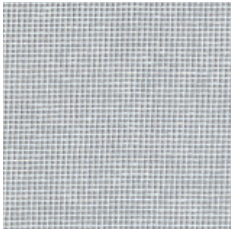


Fairy 101605-0006

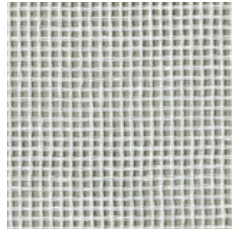
Fairy is a classic net curtain with a beautiful drape. The crisp, sharp net lets light through while creating a soft, hazy barrier to the outside. Fairy works perfect as a light room divider and to create a space within a space. The more folds it has when draped, the more intimate the room becomes. Fairy comes in a discreet, natural colour scheme, easy to combine with the other fabrics in our Texture Concept and with architectural materials.

We thought you'd like...

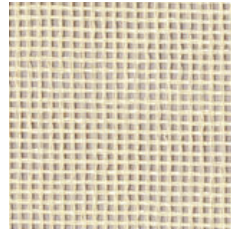
- the crisp and sharp mesh texture
- the 300 cm width providing possibility for seamless hanging in large windows
- the muted, natural palette, a part of the colour co-ordinated Texture Concept



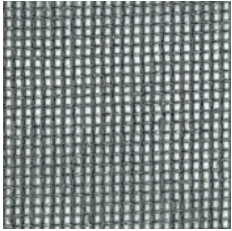
0088



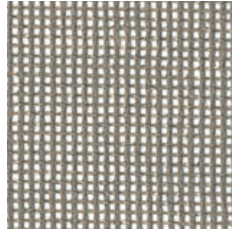
0008



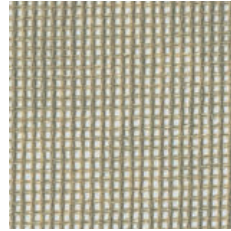
0006



0002



0005



0003








The finely curated Texture Concept celebrates the diversity of woven textiles. The concept provides endless possibilities of combining exquisite textures with different expressions; from delicate, sheer mesh and coarse mélanges to smooth velvet and dense dim-outs, for any room.

The timeless textures, which all drape beautifully, are arranged into colour families making it easy to find the right shade and light filtering property for your project.

The textures (from top):

- Harvest
- Rye
- Earth
- Fairy
- Moon
- Velvet

Product Specification

Design	Almedahls Design Studio
Material	100% Polyester FR
Light transmission	Transparent
Repeat	-
Width	300 cm, 118 inch
Weight	85 gr/m ² , 2,5 oz/yd ²
Light fastness SS-EN ISO 105-B02 (scale 1-8)	5
Colour fastness to laundering SS-EN ISO 105-C06 (scale 1-5)	4
Shrinkage SS-EN ISO 6330+A1	Max 2%
Care instructions	     Can be washed in 70°C
Fire resistance standard	EN 13773 class 1
Certificates	SS-EN ISO 14001:2004
Other info	Can be used railroaded to create a 3 m drop