



Harvest 101601-0061

*Harvest is a coarse texture with a raw and natural feel. It is woven with a linen look yarn with a discreet melange effect. The open structure let the light in while it is close enough to provide privacy. The natural texture adds character and warmth to the surroundings. The fabric is 330 cm wide, drapes beautifully and works perfect for large scale seamless applications. The colour palette consists of light and muted, slightly tinted neutrals, easy to adapt in many environments.*

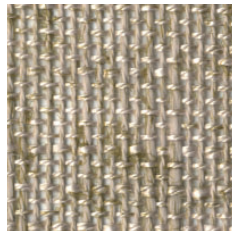
**We thought you'd like...**

- the soft coarse weave with subtle mélange effect
- the 330 cm wide fabric which drapes beautifully
- the muted, natural palette, part of the colour co-ordinated Texture Concept





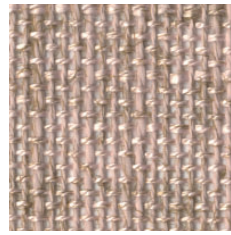
0086



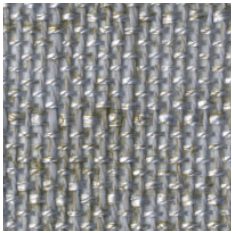
0066



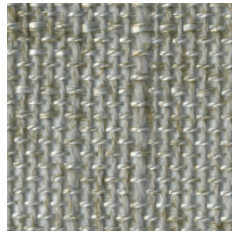
0046



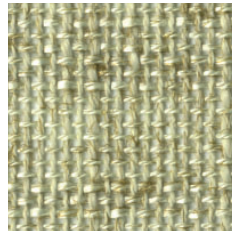
0061



0026



0056



0036



The finely curated Texture Concept celebrates the diversity of woven textiles. The concept provides endless possibilities of combining exquisite textures with different expressions; from delicate, sheer mesh and coarse mélanges to smooth velvet and dense dim-outs, for any room.






The timeless textures, which all drape beautifully, are arranged into colour families making it easy to find the right shade and light filtering property for your project.

The textures (from top):

- Harvest
- Rye
- Earth
- Fairy
- Moon
- Velvet

## Product Specification

---

Design	Almedahls Design Studio
Material	95% Polyester FR 5% Viscose
Light transmission	Transparent
Repeat	-
Width	330 cm, 130 inch
Weight	250 g/m <sup>2</sup> , 7,3 oz/yd <sup>2</sup>
Light fastness SS-EN ISO 105-B02 (scale 1-8)	5
Colour fastness to laundering SS-EN ISO 105-C06 (scale 1-5)	4
Shrinkage SS-EN ISO 6330+A1	< 2%
Care instructions	    
Fire resistance standard	EN 13773 class 1
Sound class ISO 354	E
Alfa Value	0,20
Certificates	SS-EN ISO 14001:2004
Other info	Turnable design. Can be used railroaded to create a 3 m drop. Elongation: < 2%