



Rye 101602

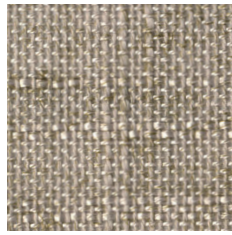
Rye is a semi-transparent curtain with a sophisticated touch. The intricate linen texture is created by using an uneven yarn with a soft mélangé effect. Up close, the mélangé effect is evident, but from a distance the surface appears more solid. The close structure provides privacy while letting the light in. The 330 cm width offers possibility to create seamless hanging in large installations. The well-balanced colour palette which include light and muted, slightly tinted neutrals, was developed to suit many environments.

We thought you'd like...

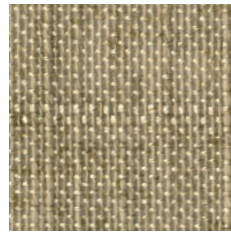
- the dense weave and the subtle mélangé effect
- the 330 cm wide fabric
- the muted, natural palette, part of the colour co-ordinated Texture Concept



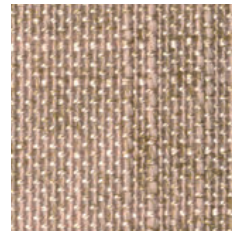
0086



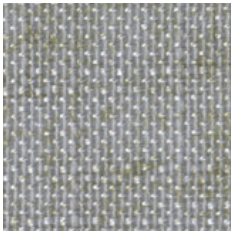
0066



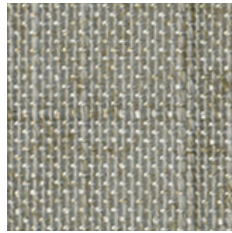
0046



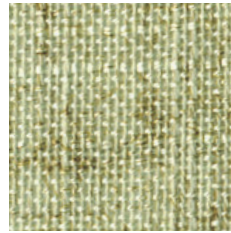
0061



0026



0056



0036




The finely curated Texture Concept celebrates the diversity of woven textiles. The concept provides endless possibilities of combining exquisite textures with different expressions; from delicate, sheer mesh and coarse mélanges to smooth velvet and dense dim-outs, for any room.

The timeless textures, which all drape beautifully, are arranged into colour families making it easy to find the right shade and light filtering property for your project.

The textures (from top):

- Harvest
- Rye
- Earth
- Fairy
- Moon
- Velvet

Product Specification

Design	Almedahls Design Studio
Material	95% Polyester FR 5% Viscose
Light transmission	Translucent
Repeat	-
Width	330 cm, 130 inch
Weight	260 g/m ² , 7,6 oz/yd ²
Light fastness SS-EN ISO 105-B02 (scale 1-8)	6
Colour fastness to laundering SS-EN ISO 105-C06 (scale 1-5)	4
Shrinkage SS-EN ISO 6330+A1	Max 2%
Care instructions	
Fire resistance standard	EN 13773 class 1
Sound Class SS-EN ISO 354	E
Alfa Value	0,20
Certificates	SS-EN ISO 14001:2004
Other info	Turnable design. Can be used railroaded to create a 3 m drop