

A photograph of a room with light-colored curtains. A wooden pendant lamp hangs from the ceiling. In the foreground, a table holds a decorative object. The word "ALMA" is overlaid in white text.

**ALMA**

**almedahls**



## Elegant sheer textile in a rich colour palette.

Alma is a sheer curtain fabric with a rich colour choice. The wide selection of neutrals is complemented by a shimmering tonal palette of colours, from soft pastels to saturated hues, making it possible to find the perfect shade for any setting. The white effect threads of the matte linen structure give the texture a vibrant look.

Alma is extraordinary smooth and pliable. The fluid textile creates a relaxed impression, whilst the soft hazy surface filters the light in a pleasant way, creating a warm and tranquil atmosphere.

Alma, available in 40 shades, is non-flame-retardant and is part of our Well-being Concepts, including Hygiene, Acoustics, and Daylight. Key features include an acoustic alpha value of 0.15, an Openness Factor of 22%, and an average solar absorption/reflection value of 52.

Also, Alma is supported by our sustainability validated value chain which is audited by EcoVadis.



Explore a rich palette of 40 shades.



**A hanging textile with  
subtle transparency.**





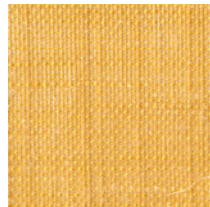
**The white effect threads of the matte linen structure gives the texture a vibrant look.**



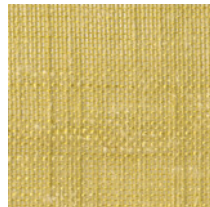
# ALMA 101985

<b>Design</b>	Almedahls Design Studio
<b>Material</b>	70% Polyester 30% Linen
<b>Number of colours:</b>	40
<b>Width</b>	300 cm, 118 inch
<b>Weight</b>	100 g/m2, 2,95 oz/yd2
<b>Colours</b>	40
<b>Light transmission</b>	Transparent
<b>Openness factor</b>	22%
<b>Turnable design</b>	Yes
<b>Fire resistance standard</b>	
<b>Sound Class SS-EN ISO 354</b>	E
<b>Alfa value</b>	0,15
<b>Sustainability profile</b>	Oekotex Standard 100 Five Zero Green SS-EN ISO 14001:2004
<b>Other info</b>	Can be used railroaded to create ≈ 2,75 m drop

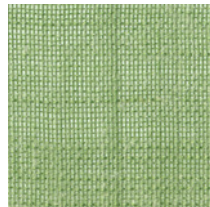




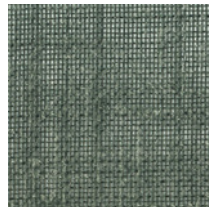
0404



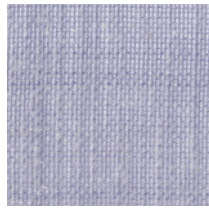
0433



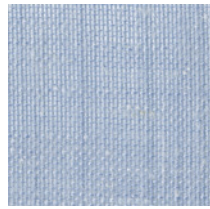
0303



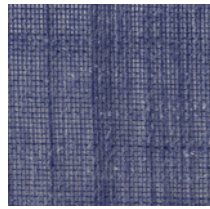
0302



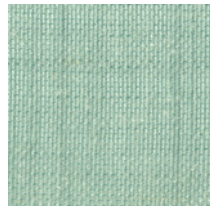
0701



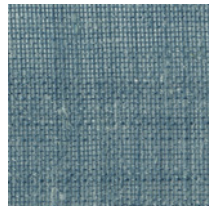
0202



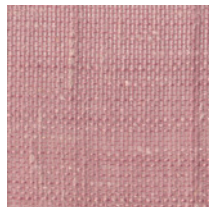
0220



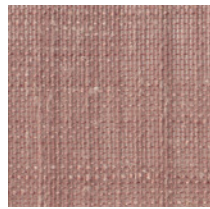
0203



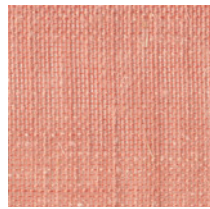
0223



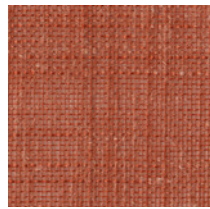
0107



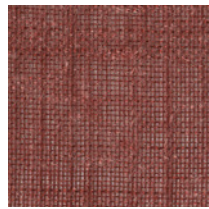
0105



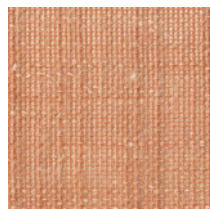
0101



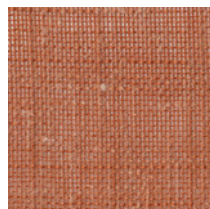
0104



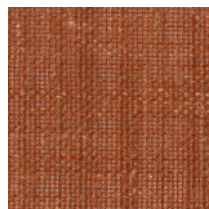
0102



0114



0144



0146



## **Almedahls AB**

Lyddevägen 8  
SE-51123 Kinna, Sweden  
Tel +46 (0)320 79 40 00

[info@almedahls.se](mailto:info@almedahls.se)  
[www.almedahls.se](http://www.almedahls.se)