



DAGG & RANGO
NEW COLOURWAYS

almedahls

WE HAVE UPDATED THE COLOURS FOR OUR CLASSIC PRINTS DAGG AND RANGO.

Both patterns have an easy expression and complement each other naturally. The lively flowy growing foliage of Rango communicates and connects with the discrete line texture of Dagg. The new contemporary colour scheme consists of tone in tone colours inspired by nature, gemstones, plants, and earthy shades. Together these new colours form a palette of slightly subdued tones, making it easy to create well-balanced environments.

ABOUT RANGO	4
ABOUT DAGG	6
COMBINING WITH OUR PLAIN COLOURED TEXTILES	12
SPECIFICATIONS RANGO	34
SPECIFICATIONS DAGG	36



RANGO

Created by Jenny Stefansdotter Stentoft in 2011, Rango has been a long time favourite in the Almedahls collection. When creating the design Jenny was inspired by trees in the Botanical Garden of Copenhagen. The interpretation of a foliage is easy to like and easy to incorporate in many spaces. It simply adds a sense of warmth and tranquillity. The two-coloured tonal effect in the cut-out leaf shapes, creates an interesting shifting colour play where the transparent textural fabric adds another dimension to the experience of the design.

The updated version of Rango has a coloured background and a slightly subdued palette. When developing the new colours Jenny was influenced by the natural elements, resulting in a palette of deep brilliant gemstone shades, plant colours and warm earthy hues. The combination of the original vibrant colours with white background together with the new subtle natural tones adds an interesting contrast to the new colour concept.



DAGG

A discrete two-colour textural pattern with a timeless expression, created by Kazuyo Nomura- renowned designer and a true textile artist. The simplicity of the pattern with intersecting broken lines blends nicely with the base fabric's delicate linen-like texture. The humble expression makes Dagg suitable for many spaces and the design is easy to combine with both patterned and monochrome fabrics in our collection. The 25% openness factor provides delicate light filtering and works beautifully as a soft, tactile room divider with its delicate transparency.

In the redesigned color range, we have kept 20 colours. In addition, we have developed 9 new subtle colours to bind the colour scheme together and to enhance a sense of warmth and tranquility. In this way, we have created a soft, nature-inspired palette with a contemporary expression. The palette includes a base of earth- and mineral tones, complemented by the ever-changing blue and grey hues of the sea and sky, as well as the different green and yellow tones of leaves and grasses.









**COMBINING DAGG & RANGO WITH OUR UNI
COLOURED HANGING TEXTILES**

With the updated colour palettes it is easy to match colour palettes and to create crossover functions with the offer of our plain coloured textiles.



COASTAL BLUE

RANGO 0025
HAZE 0028

Fresh coastal blue hues which remind of a clean yet cool environment. Rango's organic pattern and translucent character are being encountered by Haze's room darkening ability and acoustic properties. Two fabrics with contrasting functions that complete each other to build an interior.



FOREST GREEN

RANGO 0032
PANORAMA 0093

Rango in a blueish green tone together with Panorama in a darker slightly warmer fir green. Together they create a green, calming ambiance. Rango's flowy foliage and linen texture portrait a tranquil vibe. Panorama adds a sense of warmth and a soft sheen by combining a black coloured warp and dark green weft. The close texture is suitable for building a room in a room and to create privacy.



SPRING GREEN

RANGO 0033
DAGG 0035

Rango and Dagg in fresh green tones. They spark hope and energy and are an ode to springtime with its growing sprouts and buds. Dagg effortlessly matches Rango with its discrete line texture that picks up the colours from the tonal effect in the leafy pattern. Both are printed on a transparent weave with a linen texture.



SOFT AMBER

RANGO 0046
VELVET 0041

The warm and earthy colours from Rango and Velvet have a soothing effect. The light ochre colourway of Rango has a relaxed attitude that is met by the rich amber tone of our beloved dense fabric Velvet. A combination of two fabrics with opposite properties that is a great help for setting up a functional space.



LIGHT TERRACOTTA

RANGO 0044
PANORAMA II 0940

Soft burned terracotta tones that invite an atmosphere of comfort. Rango in light terracotta and a darker burned shade of Panorama. The transparency of Rango creates an interesting play of light while Panorama adds depth to the composition with a combination of different colours in warp and weft.



DEEP RED

RANGO 0014
ETAGE 0014

Deep red and pale coral tones that endorse a welcoming and lively atmosphere. Rango's light ombre pattern on the dark red background is accompanied by the smooth surface of Etage in a faded tone. A harmonic and energy filling combination with sound absorption and dimout properties.



WARM SAND

DAGG 0064
EARTH 0045

An uplifting colour combination of warm sandy colours that mirror those nostalgic sunny days at the beach. Dagg's linen texture is attended by Earth's woolly character. The small, printed short crossing lines of Dagg melts together with the subtle lustre and tonal melange effect of Earth. Muted yellows that bring a touch of summer.



LIGHT NEUTRALS

RANGO 0056
SHADE 0151

A soft and muted colour composition with a rosy hint that's soothing and peaceful. Rango's most discrete colourway is combined with the fluid and versatile sheer of Shade. Shade brings a lot of variation to the composition. It has a shimmering, almost iridescent effect because of the different colours in warp and weft. Two textiles with a subtle lustre, a defined drape and a gentle light filtering function



AUBERGINE

WIDE 0070
RANGO 0017

A slightly subdued aubergine tone and a soft greyish pink for calm spaces. Serene and elegant colours with an earthy touch. Rango's tonal foliage is easy paired with the lightly textured Wide. Their transparency is quite alike, allowing light in, but with a feeling of privacy. The slub effects adds a sense of tactility.



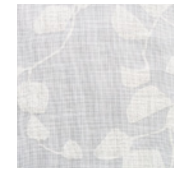
WARM YELLOW

DAGG 0046
PANORAMA II 0064

Mild and pleasant yellow hues that welcome a warm ambiance. Two curtains with properties that complement each other. Panorama, a wide uni coloured curtain fabric with remarkable sound absorption and it softens the light. Dagg, a fabric with an airy linen texture that lets the light through. Together they deliver a playful show of shades embedded in a shimmering surface.

RANGO 100191

Expression	Organic pattern
Material	100% Trevira CS
Width	140 cm
Weight	140 g/m ²
Alfa value	α 0.15
SOLAR Value Average	Rs + As = 45
Flame retardant	Yes
Five-Zero-Green	Yes
Oeko-tex	Yes
REACH compliant	Yes
Designer	Jenny Stefansdotter Stentoft
Repeat	90 cm
Turnable	No
Additional info	Washable at 70°C



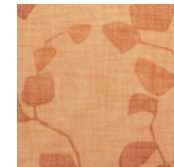
0008



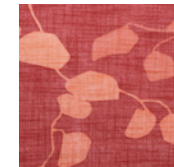
0056



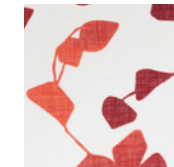
0046



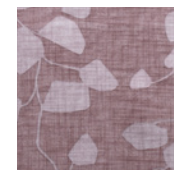
0044



0014



0001



0017



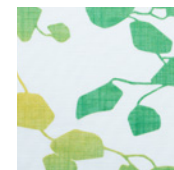
0002



0025



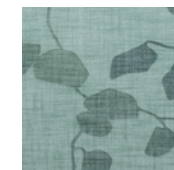
0005



0003



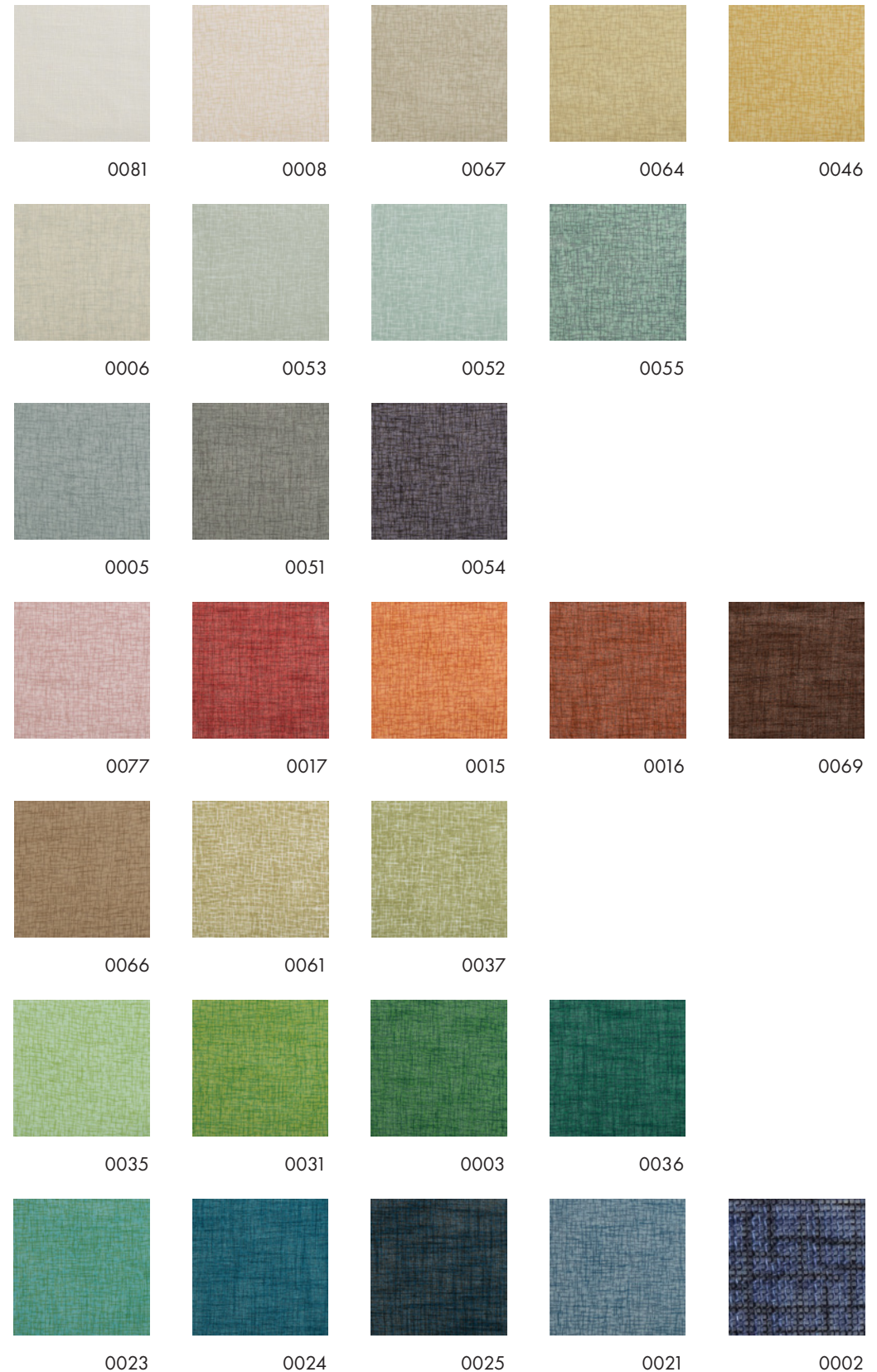
0033



0032

DAGG 100154

Expression	Textured design
Material	100% Trevira CS
Width	140 cm
Weight	140 g/m ²
Alfa value	α 0.15
SOLAR Value Average	Rs + As = 50
Flame retardant	Yes
Five-Zero-Green	Yes
Oeko-tex	Yes
REACH compliant	Yes
Designer	Kazuyo Nomura
Repeat	–
Turnable	Yes
Additional info	Washable at 70°C



Almedahls AB

Box 265

SE-51123 Kinna, Sweden

Tel +46 (0)320 79 40 00

info@almedahls.se

www.almedahls.se