



**RAMIE**

**almedahls**

## **RAMIE**

When creating Ramie our designers explored the moods of the seasons in our natural habitat, the Nordic landscape. Taking inspiration from the layers of nature, of scents, temperatures, sounds, textures, light and colours. The result is a true celebration of craft, material and tactility. The timeless, textural Ramie print is intricately combined with the linen-like fabric structure, creating a layering effect that amplifies the materiality of the design.

The colour palette includes soft, melancholic pastels inspired by the circularity of the seasons. The blend of three thoughtfully combined colours in each colourway gives several possibilities to match with other curtains from the Almedahls curtain collection.

The base fabric is made of 75% recycled polyester from post-consumer PET-bottles and post-industrial fibre waste which significantly reduces water and energy consumption and greenhouse gas emissions in the manufacturing process.





Ramie has a texture that is easily sensed, yet humble. It mirrors our natural habitat and it reminds of materials such as stone or wood.

# RAMIE 101855

<b>Design</b>	Almedahls Design Studio
<b>Material</b>	75% Recycled Polyester 25% Polyester FR
<b>Light transmission</b>	Transparent
<b>Openess factor</b>	7%
<b>Alfa value</b>	0,30
<b>Sound Class SS-EN ISO 354</b>	D
<b>Fire resistance standard</b>	DIN 4102 B1
<b>Width</b>	300 cm, 118 inch
<b>Weight</b>	215 g/m <sup>2</sup> , 6,3 oz/yd <sup>2</sup>
<b>Turnable design</b>	Yes
<b>Sustainability profile</b>	Ökotex Five Zero Green SS-EN ISO 14001:2004
<b>Additional info</b>	Can be used railroded to create a 2,75 m drop. Can be washed in 70°C



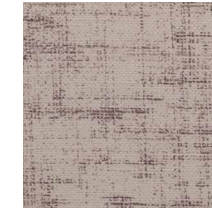
0086



0041



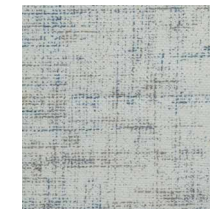
0061



0018



0064



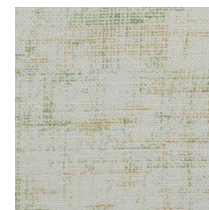
0025



0062



0026



0043



0035

# **Almedahls AB**

Box 265

SE-51123 Kinna, Sweden

Tel +46 (0)320 79 40 00

[info@almedahls.se](mailto:info@almedahls.se)

[www.almedahls.se](http://www.almedahls.se)