



Alma is a sheer curtain fabric with a rich colour choice. The wide selection of neutrals is complemented by a shimmering tonal palette of colours, from soft pastels to saturated hues, making it possible to find the perfect shade for any setting. The white effect threads of the matte linen structure give the texture a vibrant look.

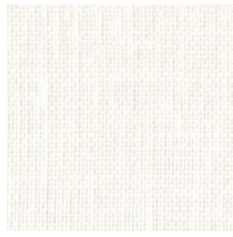
Alma is extraordinary smooth and pliable. The fluid textile creates a relaxed impression, whilst the soft hazy texture filters the light in a pleasant way, creating a warm and tranquil atmosphere.

Alma, available in 40 shades, is non-flame-retardant and is part of our Well-being Concepts, including Hygiene, Acoustics, and Daylight. Key features include an acoustic alpha value of 0.15, an Openness Factor of 22%, and an average solar absorption/reflection value of 52.

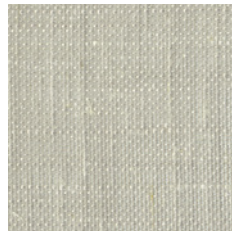
Also, Alma is supported by our sustainability validated value chain which is audited by EcoVadis.



0088



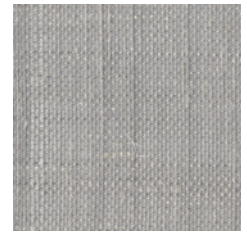
0008



0506



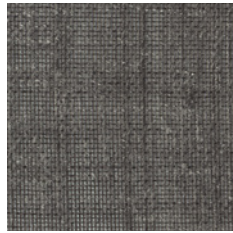
0503



0505



0502



0509



0535



0605



0606



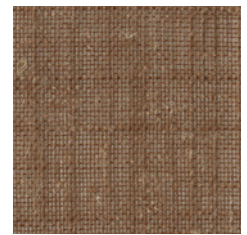
0000



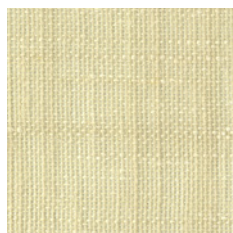
0501



0601



0616



0603



0604



0436



0406



0205



0305



0355

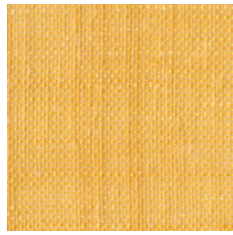


0356

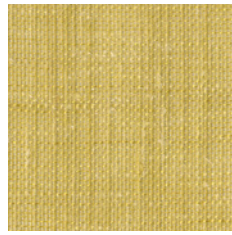


0366

hanging textile Alma 101985



0404



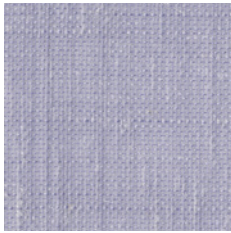
0433



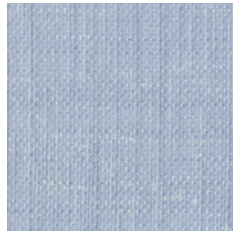
0303



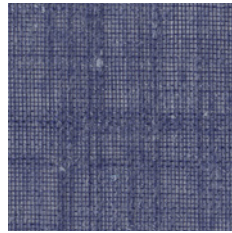
0302



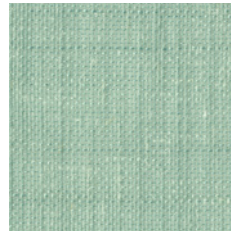
0701



0202



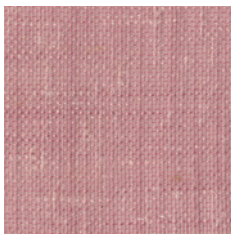
0220



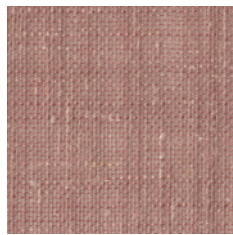
0203



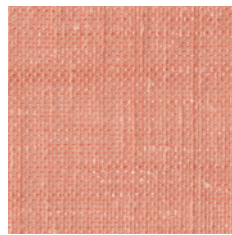
0223



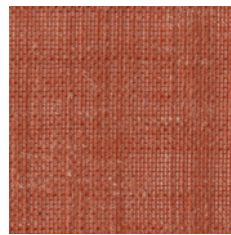
0107



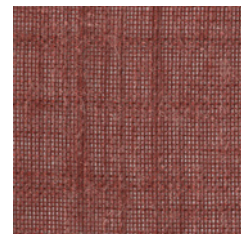
0105



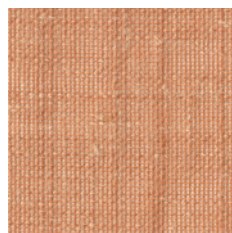
0101



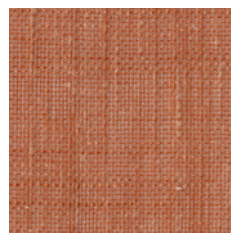
0104



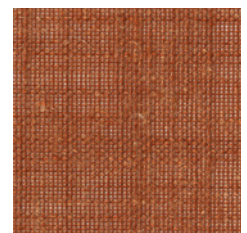
0102



0114




0144



0146

Product Specification

Design	Almedahls Design Studio
Material	70% Polyester 30% Linen
Colours	40
Light transmission	Transparent
Openess factor	22%
Repeat	-
Turnable design	Yes
Width	300 cm, 118 inch
Weight	100 g/m ² , 2,95 oz/yd ²
Light fastness SS-EN ISO 105-B02 (scale 1-8)	5 - 6
Colour fastness to laundering SS-EN ISO 105-C06 (scale 1-5)	4 - 5
Shrinkage SS-EN ISO 6330+A1	< 2%
Care instructions	 Wash with similar colours Can be washed in 70°C
Sound Class SS-EN ISO 354	E
Alfa Value	0,15
Sustainability profile	Oekotex Standard 100 Five Zero Green SS-EN ISO 14001:2004
Other info	Can be used railroaded to create ≈ 2,75 m drop