

Almelin II 100216



almedahls

Almelin II 100216

Almelin is a true Almedahls classic. The surface is created by the intricate blend of linen and polyester, which gives the fabric its soft handle and natural, vivid look. Almelin II features a slightly softer, upgraded colour palette with many options suitable for contemporary environments. The extra 330 cm width allows the fabric to be hung railroaded for seamless installations.

The transparent linen texture provides a beautiful, natural look and feel, enhanced by the generous 330 cm width for seamless hanging, along with the upgraded colour range, perfect for modern spaces.

PRODUCT INFORMATION

Design and Material

Design: Studio Almedahls
Material: 75% Polyester/25% Lin
Width: 330 cm, 130 inch
Weight: 130 g/m², 3,8 oz/yd²
Number of colors:

Pattern Features

Repeat: -
Turnable design: Yes

Light Properties

Openness factor: 13%
Solar value average: $R_s + A_s = 55$
Light transmission: Transparent

PERFORMANCE

Color Fastness

Light fastness: 4-6
(ISO 105-B02, scale 1-8)
Color fastness to laundering: 4-5
(ISO 105-C06, scale 1-5)

Acoustics

Sound class: E
SS-EN ISO 354
Alpha value: 0,15

Flame Retardant Standard

-

WASHING INSTRUCTIONS



Wash with similar colors
Can be washed at 70°C
Shrinkage: < 2%
SS-EN ISO 6330+A1

SUSTAINABILITY

OEKO-TEX® STANDARD 100
Five Zero Green
SS-EN ISO 14001:2004
REACH

OTHER INFO

Can be used railroaded to create a 3 m drop



FIVE ZERO GREEN



STANDARD 100



0 97-059 RISE

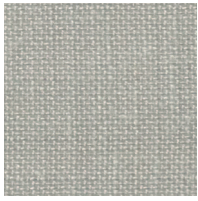


Almelin II 100216

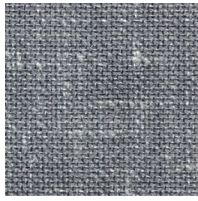
Colour



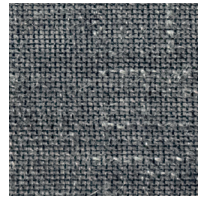
0008



0005



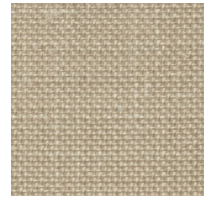
0027



0059



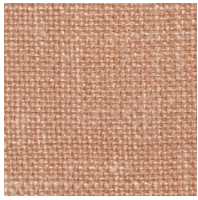
0065



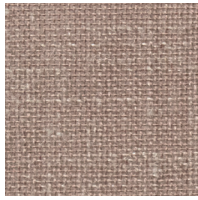
0006



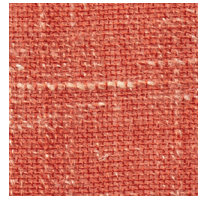
0860



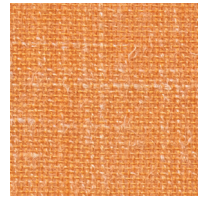
0610



0710



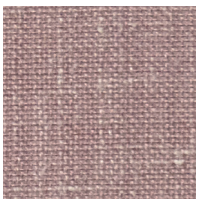
0110



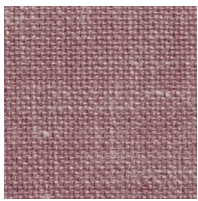
0400



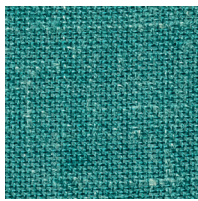
0460



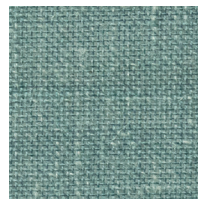
0700



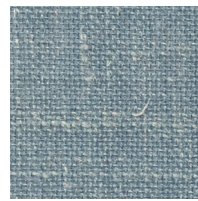
0700



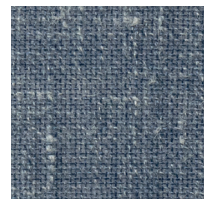
0023



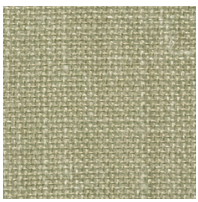
0025



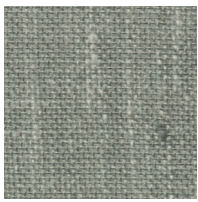
0028



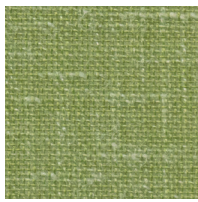
0220



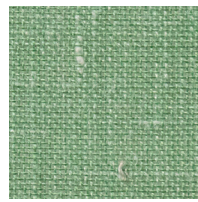
0053



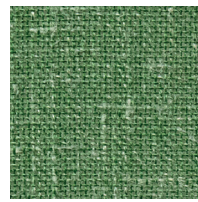
0055



0033



0030



0390