



Bast 100146

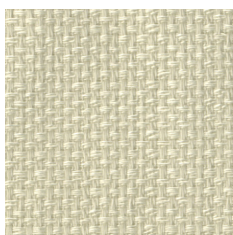
*Bast is a fabric with an unique texture and a very soft handle which creates a beautiful drape. The heavy fabric ensures great sound absorption properties and the coarse weave is perfectly suited for providing privacy. Bast has a wide colour range which contains both useful neutrals and deep saturated colours which offers endless possibilities to mix and match with both prints and plains from the Almedahls collection.*

**We thought you'd like...**

- the great sound absorption properties
- the beautiful heavy drape
- the unique woven texture



0008



0006



0053



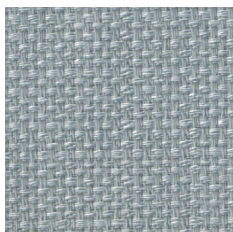
0066



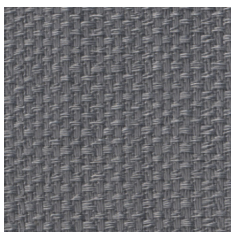
0069



0005



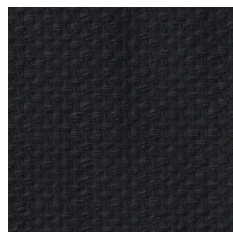
0052



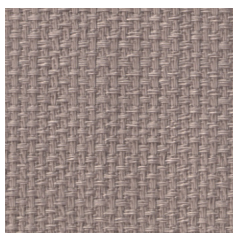
0055



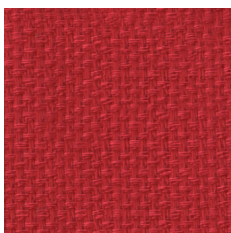
0059



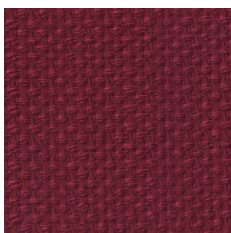
0009



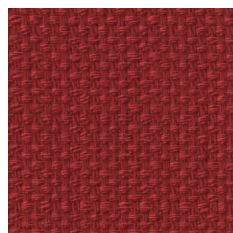
0051



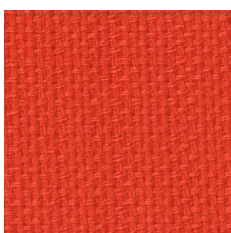
0012



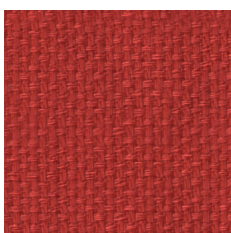
0017



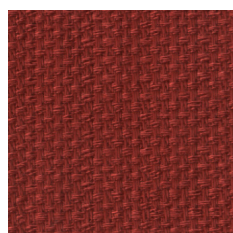
0010



0001



0011



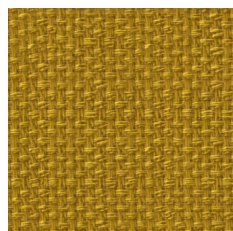
0016



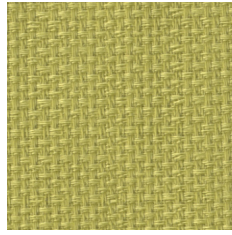
0004



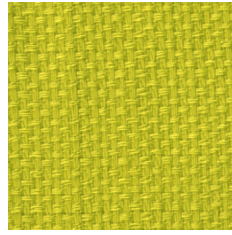
0046



0044



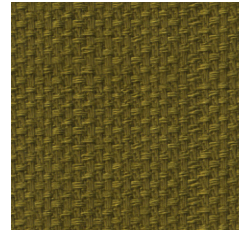
0003



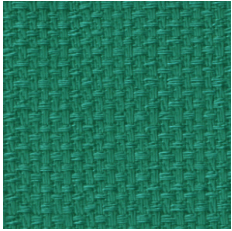
0034



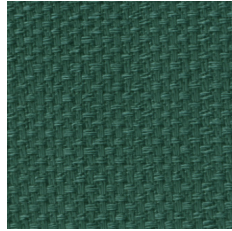
0033



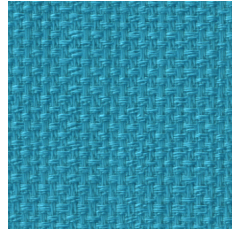
0036



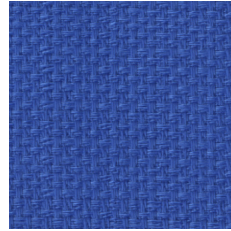
0032



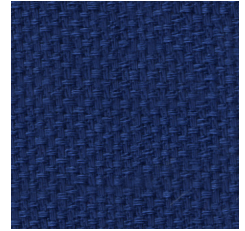
0039



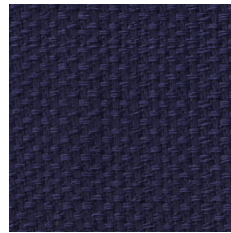
0023



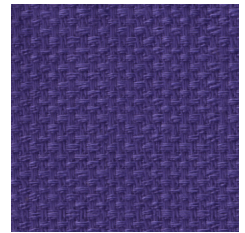
0022



0002







0029



0007

## Product Specification

Design	Almedahls Design Studio
Material	100% Polyester Trevira CS 
Light transmission	Translucent
Repeat	-
Width	140 cm, 55 inch
Weight	260 g/m <sup>2</sup> , 7,7 oz/yd <sup>2</sup>
Light fastness SS-EN ISO 105-B02 (scale 1-8)	5-6
Colour fastness to laundering SS-EN ISO 105-C06 (scale 1-5)	4-5
Shrinkage SS-EN ISO 6330+A1	< 2%
Care instructions	 Can be washed in 70°C
Fire resistance standard	IMO part 7 
Sound Class SS-EN ISO 354	C
Alfa Value	0,6
Ökotex	Yes 
Certificates	SS-EN ISO 14001:2004
Other info	The turnable fabric provides possibility to create a valence