



# CircleRest 101879



**almedahls**

# CircleRest 101879

**Circle** is a sustainable fabric concept made of fully circular copolyester, with Ocean Safe technology certified with Cradle to Cradle Gold. The benefits in short is that it is free of toxins and biodegradable, and leaves no microplastics behind. The manufacturing of the Circle fibre requires significantly fewer steps, less energy and less water consumption. At end of life the fabrics will be composted and recycled into new fibres through an established take back system.

**CircleRest** is a lightweight, textural, semi-transparent drapery. The refined weave construction gives a distinct materiality, tenderly stimulating the senses. The carefully crafted texture creates a delicate sense of depth to the piece dyed fabric. The pure look, crisp character and precise rape accentuate the sleek and elegant expression. The light nature of CircleRest balance between a sheer and a drapery creating privacy while still letting light through. The colour scheme is versatile and cool, built on contemporary neutrals working as a perfect complement the most common architectural materials as wood, concrete, glass and stone.

## PRODUCT INFORMATION

### Design and Material

Design: Studio Almedahls  
Material: 100% PES FR Biodegradable (naNea)  
Width: 300cm (118 inch)  
Weight: 163 g/m<sup>2</sup> (4,8 oz/yd<sup>2</sup>)  
Number of colors: 5

### Pattern Features

Repeat: -  
Turnable design: Yes

### Light Properties

Openness factor: 2%  
Solar value average: Rs + As = 60  
Light transmission: Translucent

## PERFORMANCE

### Color Fastness

Light fastness: 5-6  
(ISO 105-B02, scale 1-8)  
Color fastness to laundering: 4 - 5  
(ISO 105-C06, scale 1-5)

### Acoustics

Sound class: D  
SS-EN ISO 354  
Alpha value: 0,5

### Flame Retardant Standard

## WASHING INSTRUCTIONS



Wash with similar colors

Shrinkage: < 2%  
SS-EN ISO 6330+A1

## SUSTAINABILITY

Ocean Safe Certified  
Cradle to Cradle Gold  
Five Zero Green  
Biodegradable fibre  
SS-EN ISO 14001:2004  
REACH

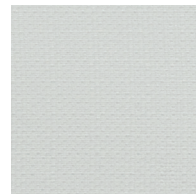
## OTHER INFO

Can be used railroaded to create a 2,75 m drop



CircleRest101879-0051

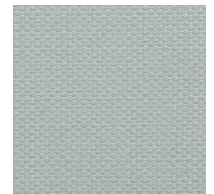
## Colour



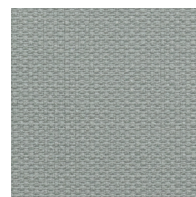
0008



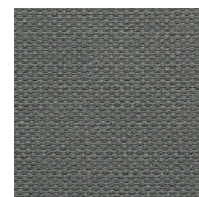
0061



0025



0051



0052