

Dagg 100154



almedahls

Dagg 100154

Dagg is a discreet textural pattern with a timeless expression, created by Kazuyo Nomura, a renowned designer and true textile artist. The simple intersecting lines blend nicely with the fabric's delicate linen-like texture. The updated colour range has a warm and tranquil expression. The versatile palette is inspired by nature. The base of earth and mineral tones is complemented by the ever-changing blue and grey hues of the sea, as well as the green and yellow tones of leaves and grasses.

The humble expression makes Dagg easy to combine with prints and plains in the Almedahls range, how the fabric filters the light, making it perfect both in windows and as a delicate room divider, and the beautiful matching colour scheme with Almedahls design classic Rango.

PRODUCT INFORMATION

Design and Material

Design: Kazuyo Nomura
Material: 100% Trevira CS
Width: 140 cm (55 inch)
Weight: 140 g/m² (4,1 oz/yd²)
Number of colors: 29

Pattern Features

Repeat: -
Turnable design: Yes

Light Properties

Openness factor: 25%
Solar value average: Rs + As = 50
Light transmission: Transparent

PERFORMANCE

Color Fastness

Light fastness: 6
(ISO 105-B02, scale 1-8)
Color fastness to laundering: 4-5
(ISO 105-C06, scale 1-5)

Acoustics

Sound class: E
SS-EN ISO 354
Alpha value: 0.15

Flame Retardant Standard

IMO 2010 FTP Code part 7
NT Fire 43 Class1



WASHING INSTRUCTIONS



Wash with similar colors
Can be washed at 70°C
Shrinkage: < 2
SS-EN ISO 6330+A1

SUSTAINABILITY

OEKO-TEX® STANDARD 100
Five Zero Green
SS-EN ISO 14001:2004
REACH

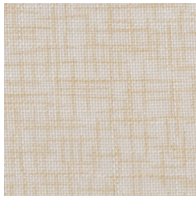


Dagg 100154-0052

Colour



0081



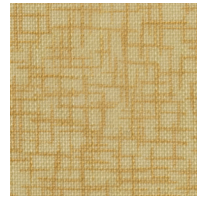
0008



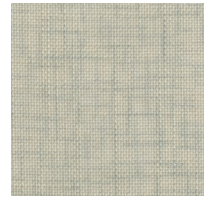
0067



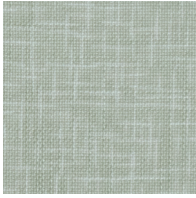
0064



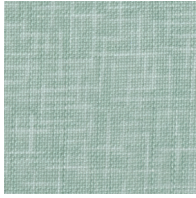
0046



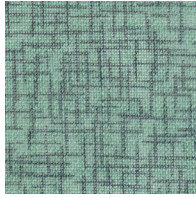
0006



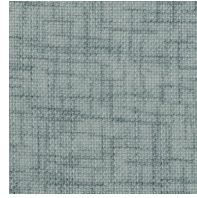
0053



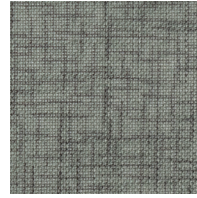
0052



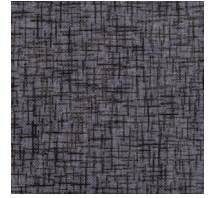
0055



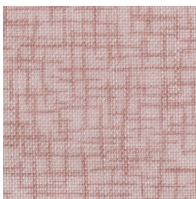
0005



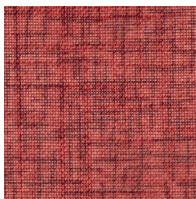
0051



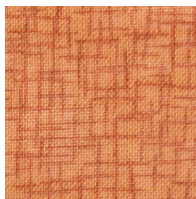
0054



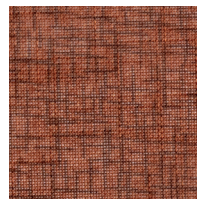
0077



0017



0015



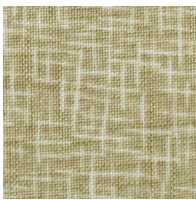
0016



0069



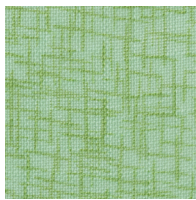
0066



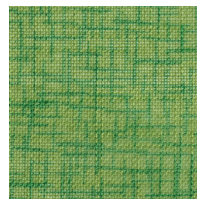
0061



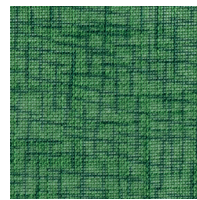
0037



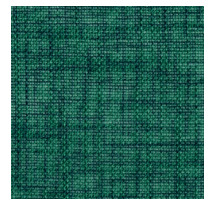
0035



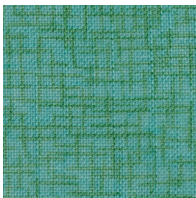
0031



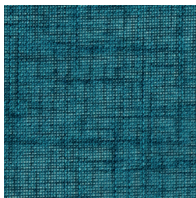
0003



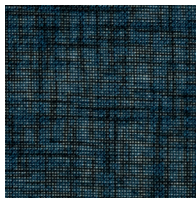
0036



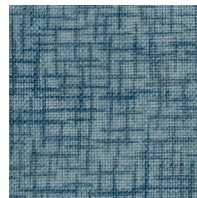
0023



0024



0025



0021



0002