

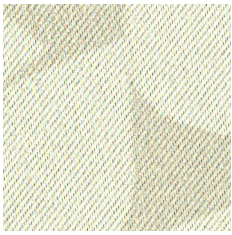


Edsviken II 100124-0035

Edsviken II is a wide dimout with good sound absorption properties and a surface pattern with an interesting story. The design was created in collaboration with renowned architects Claesson Koivisto Rune. The pattern was developed from architectural drawings for a private house named Edsviken. The characteristic curved plan of the house was replicated so that the duplicated and intersected curved lines delimits something that strongly resembles a leaf. And repeated – an entire foliage! The soft two-toned colour scheme is inspired by colours that are around us, in nature, on façades and in solid interior materials.

We thought you'd like...

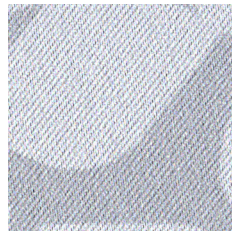
- the sound absorption properties
- the 290 cm width fabric ensures seamless hanging
- the graphic design expression developed from house drawings



0038



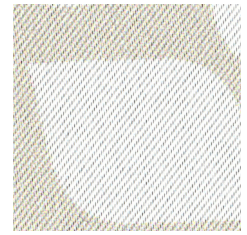
0005



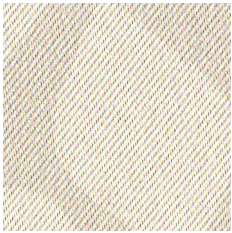
0055



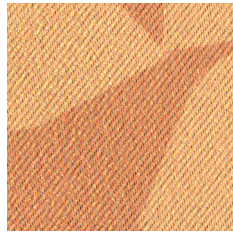
0058



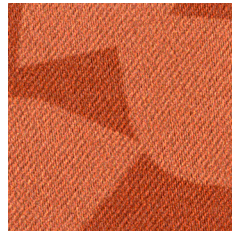
0068



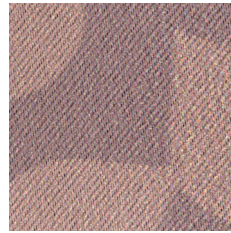
0066



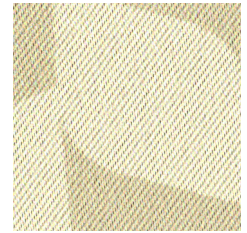
0067



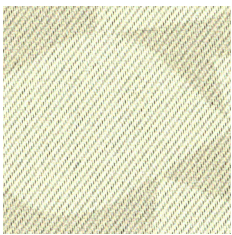
0001



0076



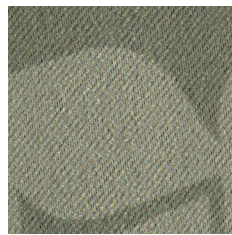
0048



0035



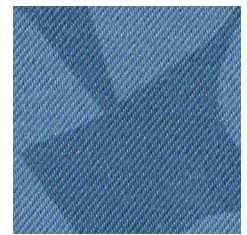
0003



0053



0023





0002



0029

Product Specification

Designer	Claesson Koivisto Rune
Material	100% Polyester FR
Light transmission	Dimout
Repeat	-
Width	290 cm, 114.2 inch
Weight	260 g/m ² , 7,7 oz/yd ²
Light fastness SS-EN ISO 105-B02 (scale 1-8)	5 - 6
Colour fastness to laundering SS-EN ISO 105-C06 (scale 1-5)	4 - 5
Shrinkage SS-EN ISO 6330+A1	40°C 1-2% 60°C 4%
Care instructions	
Fire resistance standard SS-EN 1021-1:2014	IMO 2010 FTP code part 7 DIN 4102 (B1) NFP 92-503, 92-505, 92-507 (M1) BS 5867, TYP B
Sound Class SS-EN ISO 354	C
Alfa Value	0,65
Ökotex	Yes 
Certificates	SS-EN ISO 14001:2004
Other info	Turnable pattern. Can be used rail-roaded to create a 3 m drop