

# Fairy 101605



**almedahls**

# Fairy 101605

Fairy is a classic net curtain with a beautiful drape. The crisp, sharp net lets light through while creating a soft, hazy barrier to the outside. Fairy works perfectly as a light room divider and to create a space within a space. The more folds it has when draped, the more intimate the room becomes. Fairy comes in a discreet, natural colour scheme, which is easy to combine with other fabrics in our Texture Concept and with architectural materials.

The crisp and sharp mesh texture, along with the 300 cm width that allows for seamless hanging in large windows, and the muted, natural palette as part of the colour-coordinated Texture Concept, makes Fairy a versatile and elegant choice.

## PRODUCT INFORMATION

### Design and Material

Design: Studio Almedahls  
Material: 100% Polyester FR  
Width: 300 cm (118 inch)  
Weight: 85 g/m<sup>2</sup> (2.5 oz/yd<sup>2</sup>)  
Number of colors: 6

### Pattern Features

Repeat: -  
Turnable design: Yes

### Light Properties

Openness factor: 36%  
Solar value average: Rs + As = 40  
Light transmission: Transparent

## PERFORMANCE

### Color Fastness

Light fastness: 5  
(ISO 105-B02, scale 1-8)

Color fastness to laundering: 4  
(ISO 105-C06, scale 1-5)

### Acoustics

Sound class: SS-EN ISO 354  
Alpha value: 0,05

### Flame Retardant Standard

EN 13773 class 1



## WASHING INSTRUCTIONS



Wash with similar colors  
Can be washed at 70°C

Shrinkage: < 2%  
SS-EN ISO 6330+A1

## SUSTAINABILITY

OEKO-TEX® STANDARD 100  
Five Zero Green  
SS-EN ISO 14001:2004  
REACH

## OTHER INFO

Can be used railroaded to create a 3 m drop



FIVE ZERO GREEN



STANDARD 100

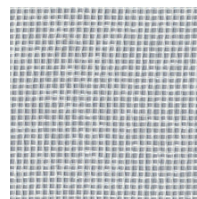


0 97-059 RISE

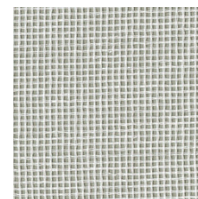


Fairy 101605

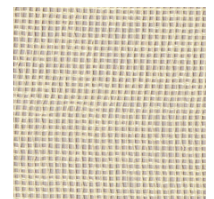
## Colour



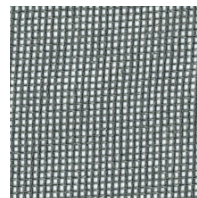
0088



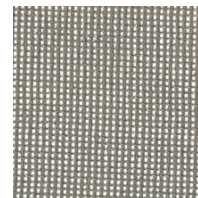
0008



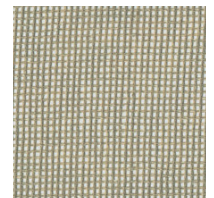
0006



0002



0005



0003

almedahls