

# Harvest 101601



**almedahls**

# Harvest 101601

Harvest has a coarse texture with a raw and natural feel. It is woven with a linen-look yarn featuring a discreet mélange effect. The open structure lets the light in while still providing privacy. The natural texture adds character and warmth to the surroundings. The fabric is 330 cm wide, drapes beautifully, and works perfectly for large-scale seamless applications. The colour palette consists of light and muted, slightly tinted neutrals, making it easy to adapt to many environments.

The soft, coarse weave with its subtle mélange effect, the 330 cm wide fabric that drapes beautifully, and the muted, natural palette, part of the colour-coordinated Texture Concept, make Harvest a versatile and elegant choice.

## PRODUCT INFORMATION

### Design and Material

Design: Studio Almedahls  
Material: 95% Polyester FR/5% Viscose  
Width: 330 cm (130 inch)  
Weight: 250 g/m<sup>2</sup> (7,3 oz/yd<sup>2</sup>)  
Number of colors: 7

### Pattern Features

Repeat: -  
Turnable design: Yes

### Light Properties

Openness factor: 12%  
Solar value average: Rs + As = 65  
Light transmission: Transparent

## PERFORMANCE

### Color Fastness

Light fastness: 5  
(ISO 105-B02, scale 1-8)  
Color fastness to laundering: 4  
(ISO 105-C06, scale 1-5)

### Acoustics

Sound class: E  
SS-EN ISO 354  
Alpha value: 0,20

### Flame Retardant Standard

EN 13773 class 1



## WASHING INSTRUCTIONS



Wash with similar colors

Shrinkage: < 2%  
SS-EN ISO 6330+A1

## SUSTAINABILITY

Five Zero Green  
SS-EN ISO 14001:2004  
REACH

## OTHER INFO

Turnable design. Can be used railroaded to create a 3 m drop. Elongation: < 2%

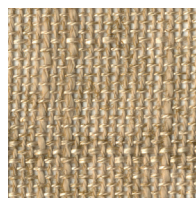


FIVEZEROGREEN



Harvest 101601-0056

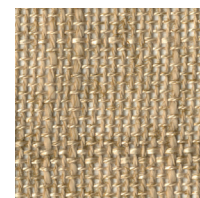
## Colour



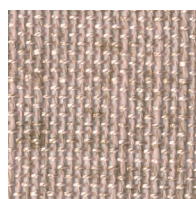
0086



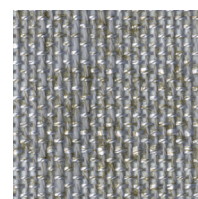
0066



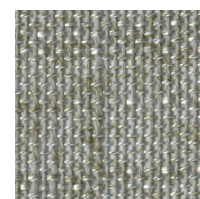
0046



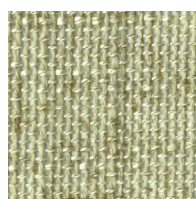
0061



0026



0056



0036