

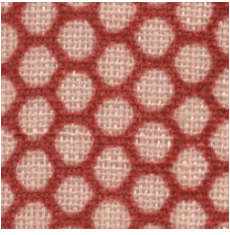


Hive 101397 - 0052

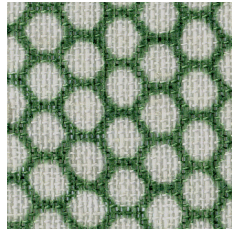
Hive is a hexagonal pattern inspired by the honeycomb structure in beehives. Hive is created by skilled surface pattern designer Ulla Gustavsson. The pattern is printed on 100% recycled fabric made from PET - bottles. The small scale and two coloured print, makes Hive a flexible choice to co-ordinate with both our plain fabrics and larger printed patterns.

We thought you'd like...

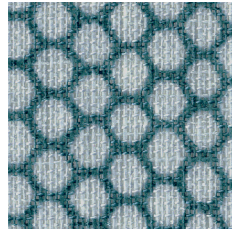
- the environmentally friendly Öko-Tex® certified flame retardant treatment developed by Almedahls
- the 100% Recycled Polyester made from PET-bottles
- the beautiful light filtering properties



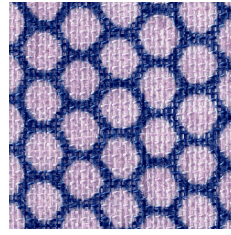
0004



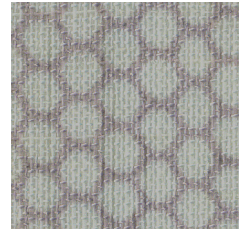
0003



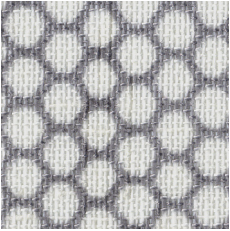
0023



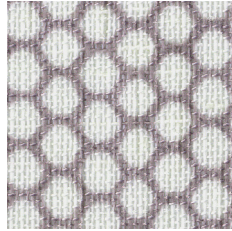
0027



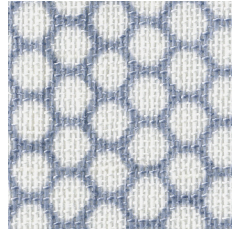
0052



0055






0086



0082

Product Specification

Design	Ulla Gustavsson Virtuelli Design Studio
Material	100% Recycled Polyester FR
Light transmission	Transparent
Repeat	-
Width	200 cm, 78 inch
Weight	155 g/m ² , 4,6 oz/yd ²
Light fastness SS-EN ISO 105-B02 (scale 1-8)	5-6
Colour fastness to laundering SS-EN ISO 105-C06 (scale 1-5)	4-5
Shrinkage SS-EN ISO 6330+A1	<2%
Care instructions	 Can be washed in 70°C
Fire resistance standard	IMO part 7 
Sound Class SS-EN ISO 354	E
Alfa Value	0,15
Ökotex	Yes 
Certificates	SS-EN ISO 14001:2004
Other info	Pure FR treatment