



Ink 100168 - 0067

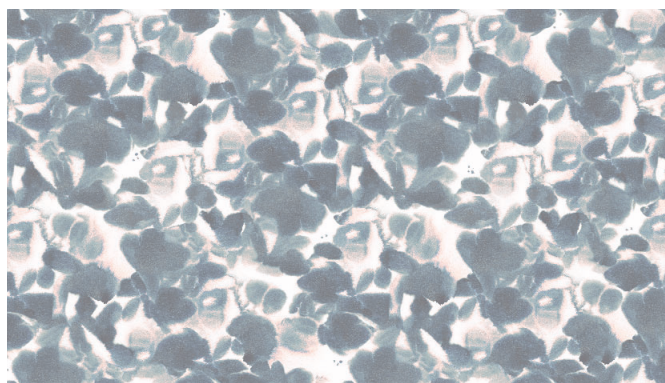
The foliage of the chestnut trees on Djurgården in Stockholm has been the inspiration for the Ink design by Maria Löw. At the same time figurative and abstract, it forms a surface pattern well suited for many public spaces. As the name suggests this pattern is painted with liquid ink where the different colours blend beautifully together. The colours and the material in harmony give a warm and calm feeling to any room.

We thought you'd like...

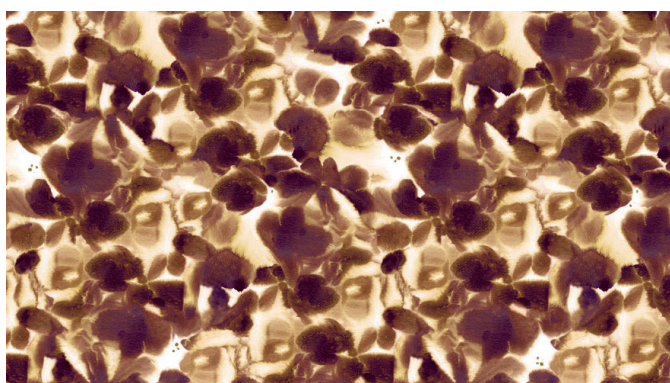
- the delicate filtering of the light
- the surface pattern in a new form
- the soft design expression inspired by nature
- the colour range of pale and rustic earth tones



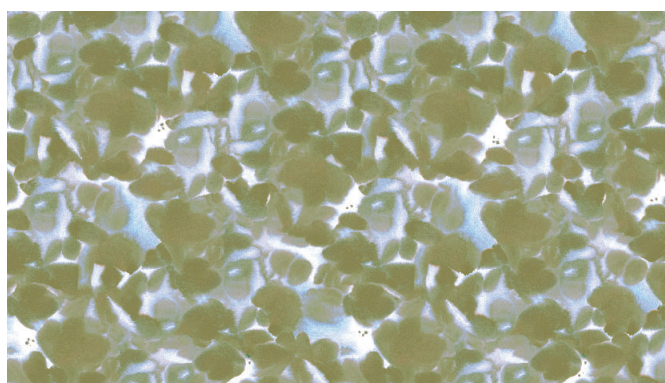
0085



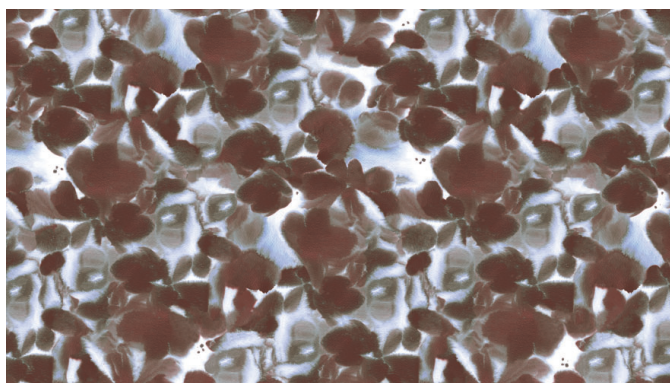
0051



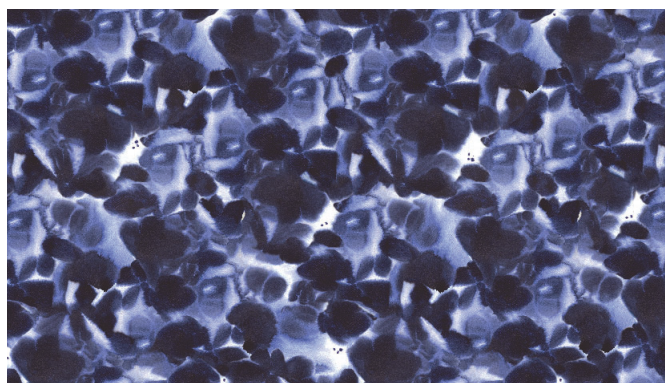
0046



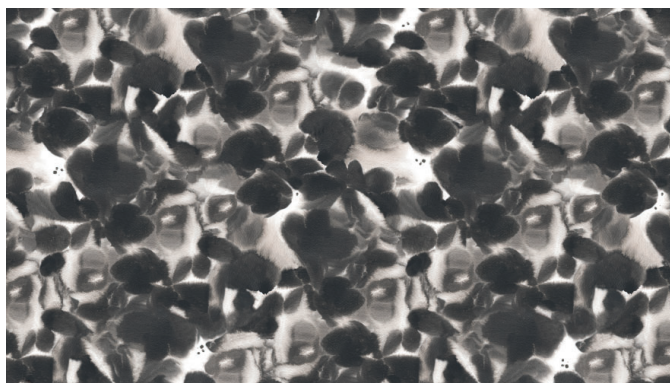
0034



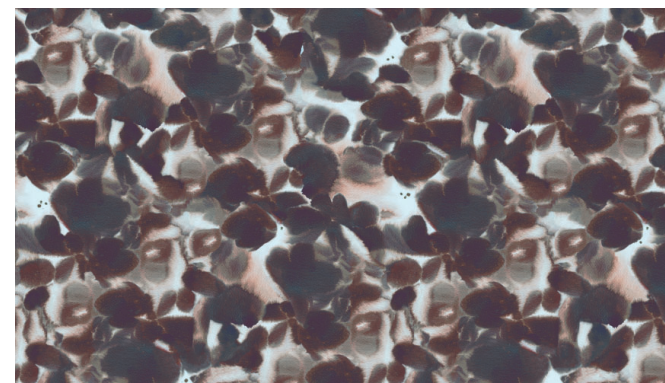
0063



0029







0095



0067

Product Specification

Design	Maria Löw
Material	100% Polyester Trevira CS 
Light transmission	Transparent
Repeat	62 cm, 24,4 inch
Width	140 cm, 55 inch
Weight	140 g/m ² , 4,13 oz/yd ²
Light fastness SS-EN ISO 105-B02 (scale 1-8)	5-6
Colour fastness to laundering SS-EN ISO 105-C06 (scale 1-5)	4-5
Shrinkage SS-EN ISO 6330+A1	< 2%
Care instructions	 Can be washed in 70°C
Fire resistance standard	IMO part 7 
Sound Class SS-EN ISO 354	E
Alfa Value	0,15
Ökotex	Yes 
Certificates	SS-EN ISO 14001:2004
Other info	The turnable pattern provides possibility to create a valence