



Leaves II 101175-0008

*The renowned architect trio Claesson Koivisto Rune tells us the inspiration for the Leaves design:
"One day, when we designed the Sfera Cultural House in Kyoto, Japan, we wandered along the river through the geisha quarters. Suddenly we saw sun rays coming through the tree foliage making shadows on the ground. Right there we decided to make a facade of perforated titan for Sfera. From that idea we created the textile pattern Leaves, first as a burnout fabric and now as a flame retardant curtain fabric."*

We thought you'd like...

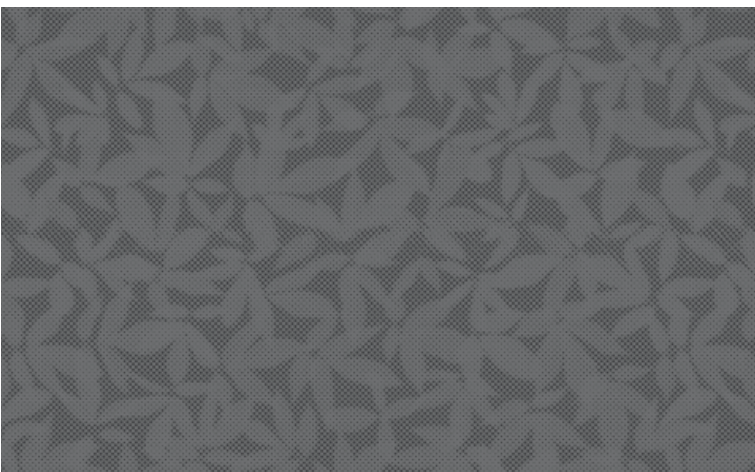
- the subtle surface of dots generating a smooth pattern of leaves
- the effect of a burn-out fabric in a flame retardant version
- the modern, but still timeless design



0008









0005



0055

Product Specification

Design	Claesson, Koivisto, Rune
Material	100% Polyester Trevira CS
Light transmission	Transparent
Repeat	90 cm, 35,4 inch
Width	140 cm, 55 inch
Weight	100 g/m ² , 3 oz/yd ²
Light fastness SS-EN ISO 105-B02 (scale 1-8)	5-6
Colour fastness to laundering SS-EN ISO 105-C06 (scale 1-5)	4-5
Shrinkage SS-EN ISO 6330+A1	<2%
Care instructions	     Can be washed in 70°C
Fire resistance standard	IMO part 7 
Ökotex	Yes
Certificates	SS-EN ISO 14001:2004