



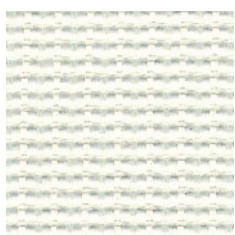
Leno 100176-0007

*Leno is a coarse mesh fabric with a soft handle and a heavy drape. It has a sporty look which is reflected in the lively colour palette containing a combination of dynamic saturated hues and muted neutrals. The fabric is well suited to be used as a light room divider and when sunlight shines through the coarse grid structure an intriguing shadow play is created.*

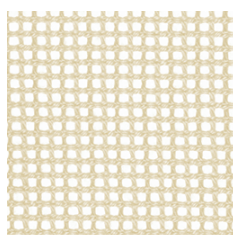
**We thought you'd like...**

- the combination of vibrant colours and calm neutrals
- the light filtering properties creating captivating shadow play
- the heavy drape bringing a sense of softness to the surroundings

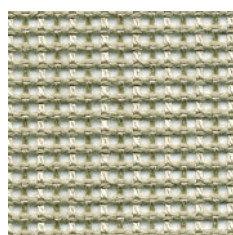




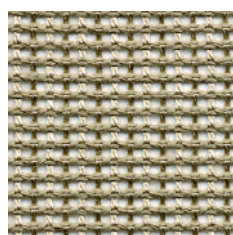
0086



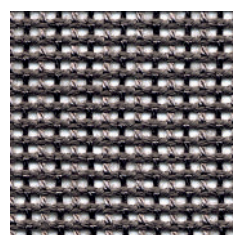
0006



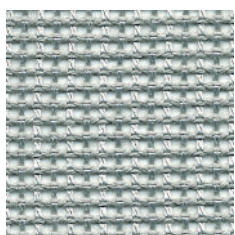
0060



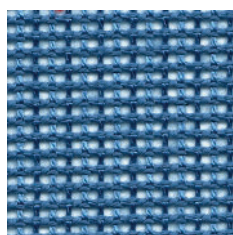
0066



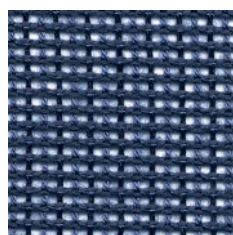
0069



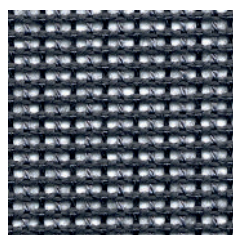
0005



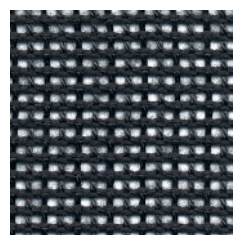
0002



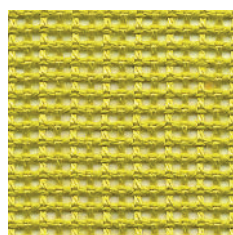
0029



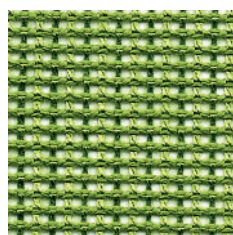
0059



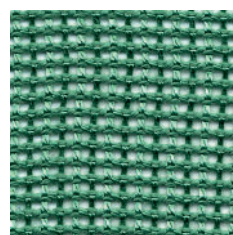
0009



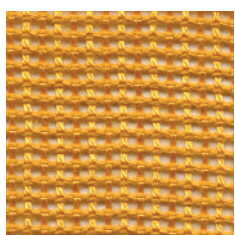
0004



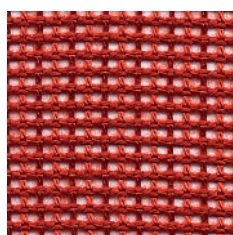
0034



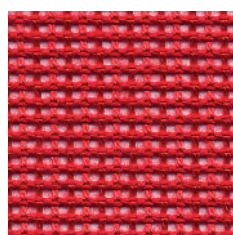
0003



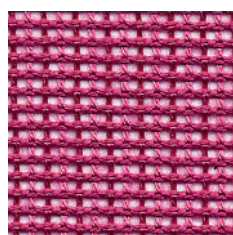
0041



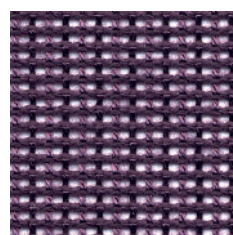
0014



0001







0071



0007

## Product Specification

---

|  |   |
|--|---|
| Design   | Almedahls Design Studio   |
| Material   | 100% Polyester Trevira CS  |
| Light transmission   | Transparent   |
| Repeat   | -   |
| Width  | 140 cm, 55 inch   |
| Weight   | 240 g/m <sup>2</sup> , 7 oz/yd <sup>2</sup>   |
| Light fastness<br>SS-EN ISO 105-B02 (scale 1-8)                | 5-6   |
| Colour fastness to laundering<br>SS-EN ISO 105-C06 (scale 1-5) | 4-5   |
| Shrinkage<br>SS-EN ISO 6330+A1                                 | <2%   |
| Care instructions  |                          |
| Fire resistance standard                                       | IMO part 7               |
| Ökotex   | Yes                      |
| Certificates   | SS-EN ISO 14001:2004  |