

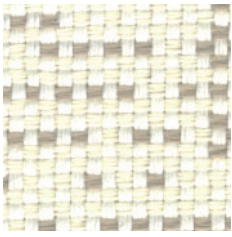


Memo 100223

Memo is a jacquard pattern with a contemporary feel. The base is a simple two-coloured check pattern with an addition of an unevenly spread third colour which creates the lively surface. The colourways are an intriguing mix of pop colours and more subdued tones. The 100% Trevira CS material ensures excellent flame retardant properties and makes it easy to wash.

We thought you'd like...

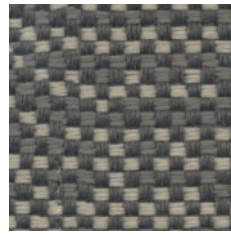
- the intriguing pattern
- the 150 cm wide fabric
- the easy care Trevira CS material



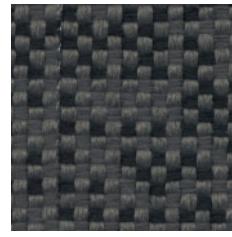
0009



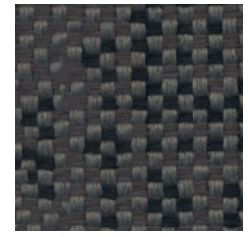
0090



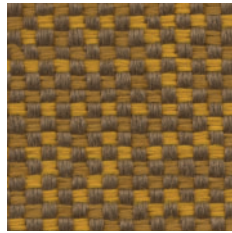
0089



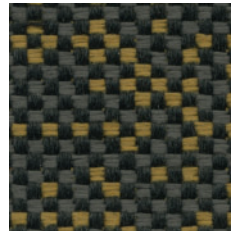
0086



0087



0060



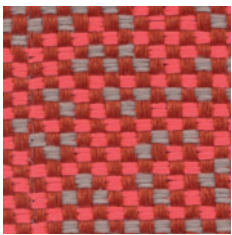
0068



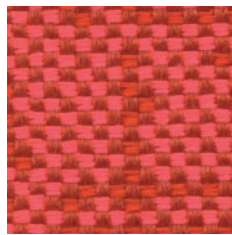
0078



0077



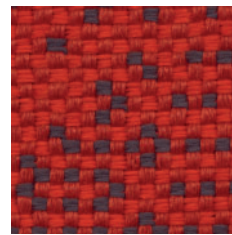
0001



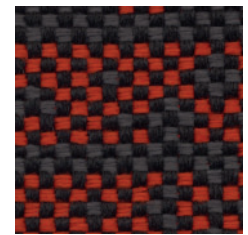
0010



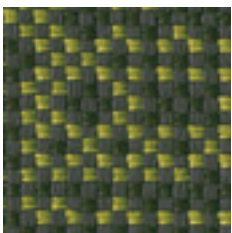
0020



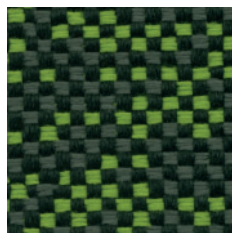
0018



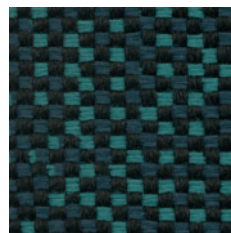
0081



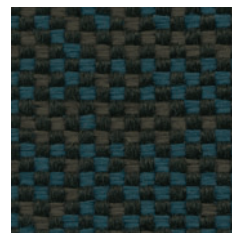
0050



0054



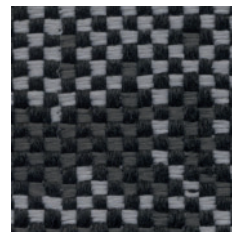
0040



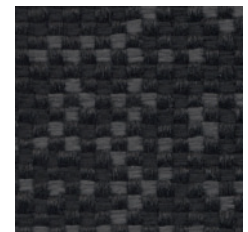
0047



0084




0080



0088

Product Specification

Design	Almedahls Design Studio
Material	100% Polyester Trevira CS
Width	150 cm, 59 inch
Weight	543 g/m ² , 16 oz/yd ²
Abrasion resistance SS-EN ISO 12947-2	>50000 Martindale
Pilling SS-EN ISO 12945-2 (scale 1-5)	5
Seam slippage SS-EN ISO 13936-2	3 mm
Light fastness SS-EN ISO 105-B02 (scale 1-8)	6
Colour fastness to rubbing SS-EN ISO 105-X12 (scale 1-5)	Dry 4 - 5 Wet 4 - 5
Colour fastness to laundering SS-EN ISO 105-C06 (scale 1-5)	4 - 5
Colour fastness to water spotting SS-EN ISO 105-E16 (scale 1-5)	5
Colour fastness to perspiration SS-EN ISO 105-E04 (scale 1-5)	4 - 5
Shrinkage SS-EN ISO 6330+A1	<2 %
Care instructions	
Fire resistance standard	BS 5852 Part 0+2 crib 5 ISO 8191 part 1+2 DIN 4102-B1 EN 1021 1 + 2
Sound class SS-EN ISO 354:2003	B
Alfa Value	0,80
ÖkoTex	Yes
Certificates	SS-EN ISO 14001:2004