

# Moon 101603



**almedahls**

# Moon 101603

Moon is a dimout with coarse natural texture at the front of the fabric while the back is smooth with a slight lustre. The fabric has a soft and heavy drape. The width of the fabric offers the possibility of using it railroaded to create seamless hanging in large windows. Apart from the room darkening function, the fabric also has good sound absorption properties. Moon comes in a mix of six versatile neutrals, perfect for a calm and natural setting.

The dimout fabric's textured surface, its generous 300 cm width, and the muted, natural palette, which is part of the colour-coordinated Texture Concept, make it an ideal choice for creating serene and harmonious interiors.

## PRODUCT INFORMATION

### Design and Material

Design: Studio Almedahls  
Material: 100% Polyester FR  
Width: 300 cm (118 inch)  
Weight: 285 g/m<sup>2</sup> (8,4 oz/yd<sup>2</sup>)  
Number of colors: 6

### Pattern Features

Repeat: -  
Turnable design: Yes

### Light Properties

Openness factor: Dimout  
Solar value average: Rs + As = 100  
Light transmission: Dimout

## PERFORMANCE

### Color Fastness

Light fastness: 3-4  
(ISO 105-B02, scale 1-8)

Color fastness to laundering: 3-4  
(ISO 105-C06, scale 1-5)

### Acoustics

Sound class: C  
SS-EN ISO 354  
Alpha value: 0,7

### Flame Retardant Standard

Classe 1



## WASHING INSTRUCTIONS



Wash with similar colors  
Can be washed at 70°C

Shrinkage: < 2%  
SS-EN ISO 6330+A1

## SUSTAINABILITY

OEKO-TEX® STANDARD 100  
Five Zero Green  
SS-EN ISO 14001:2004  
REACH

## OTHER INFO

Turnable design. Can be used railroaded to create a 3 m drop

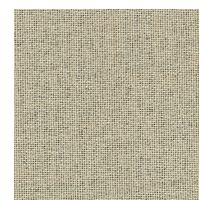


Moon 101603

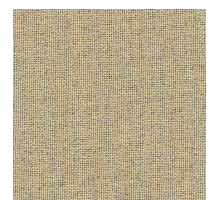
## Colour



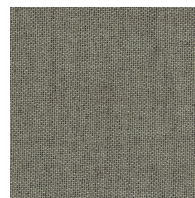
0083



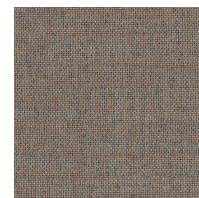
0008



0084



0055



0065



0066

**almedahls**