

Note 101900



almedahls

Note 101900

Note is ethereal and transparent, thin as gauze, but still full of character. The cross-weave with twisting threads creates the delicate net texture. Even though the fabric is completely see-through it adds a certain atmosphere. The shimmering surface brings a beautiful play with light. A twocoloured effect yarn in the weft, creates a shifting expression depending on the light conditions. Note is the perfect sheer for windows where lots of light is required to come into the room, or used as a subtle room divider when remaining contact with the surroundings is desired.

The colour palette is characterized by a sophisticated Nordic elegance, a composition of neutrals, soft pastels, and an intense blue and a deep forest green for contrast. Note is carefully coordinated with the lush and elegant diagonal texture.

PRODUCT INFORMATION

Design and Material

Design: Studio Almedahls
Material: 100% Trevira CS
Width: 312 cm (122 inch)
Weight: 75 g/m² (2,2 oz/yd²)
Number of colors: 12

Pattern Features

Repeat: -
Turnable design: Yes

Light Properties

Openness factor: 26%
Solar value average: Rs + As = 45
Light transmission: Transparent

PERFORMANCE

Color Fastness

Light fastness: 6
(ISO 105-B02, scale 1-8)
Color fastness to laundering: 4 - 5
(ISO 105-C06, scale 1-5)

Acoustics

Sound class: -
SS-EN ISO 354
Alpha value: 0,10

Flame Retardant Standard

Flame retardant according to:
NFPA 701:2010
Classe Uno
NFP 92-503/504/505/507-M1
DIN 4102 (B1)
EN 13773 class 1
BS 5867 Part 2C

WASHING INSTRUCTIONS



Wash with similar colors
Can be washed at 70°C
Shrinkage: < 2%
SS-EN ISO 6330+A1

SUSTAINABILITY

OEKO-TEX® STANDARD 100
Five Zero Green
SS-EN ISO 14001:2004
REACH

OTHER INFO

Can be used railroaded to create ≈ 2,85 m drop.

Please note the direction of the fabric. Appearance will slightly change when the fabric is turned.



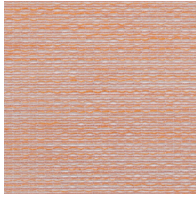
Note 101900-0064

almedahls

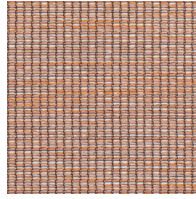
Colour



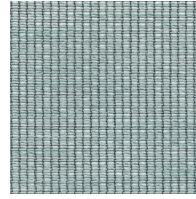
0046



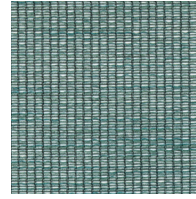
0048



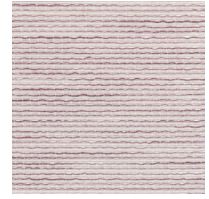
0064



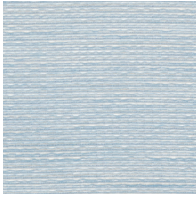
0035



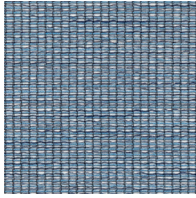
0030



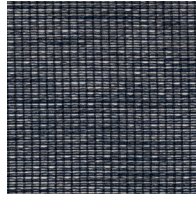
0078



0028



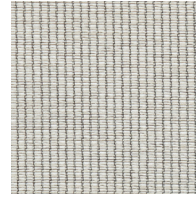
0022



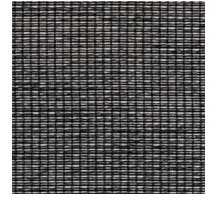
0029



0066



0056



0009