

Rye 101602



almedahls

Rye 101602

Rye is a semi-transparent curtain with a sophisticated touch. The intricate linen texture is created by using an uneven yarn with a soft mélange effect. Up close, the mélange effect is evident, but from a distance, the surface appears more solid. The close structure provides privacy while still allowing light to enter. The 330 cm width offers the possibility of creating seamless hanging in large installations. The well-balanced colour palette, which includes light and muted, slightly tinted neutrals, was developed to suit many environments.

The dense weave with its subtle mélange effect, the 330 cm wide fabric, and the muted, natural palette that is part of the colour-coordinated Texture Concept, make Rye a versatile and elegant choice.

PRODUCT INFORMATION

Design and Material

Design: Studio Almedahls
Material: 95% Polyester FR / 5% Viskos
Width: 330 cm (130 inch)
Weight: 260 g/m² (7,6 oz/yd²)
Number of colors: 7

Pattern Features

Repeat: -
Turnable design: Yes

Light Properties

Openness factor: 10%
Solar value average: Rs + As = 75
Light transmission: Translucent

PERFORMANCE

Color Fastness

Light fastness: 6
(ISO 105-B02, scale 1-8)

Color fastness to laundering: 4
(ISO 105-C06, scale 1-5)

Acoustics

Sound class: E
SS-EN ISO 354

Alpha value: 0,20

Flame Retardant Standard

EN 13773 class 1



WASHING INSTRUCTIONS



Wash with similar colors

Shrinkage: < 2%
SS-EN ISO 6330+A1

SUSTAINABILITY

Five Zero Green
SS-EN ISO 14001:2004
REACH

OTHER INFO

Turnable design. Can be used railroaded to create a 3 m drop

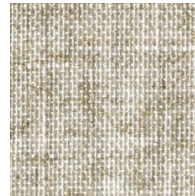


FIVEZEROGREEN

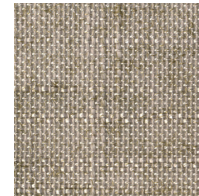


Rye 101602-0061

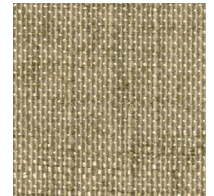
Colour



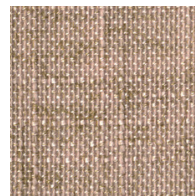
0086



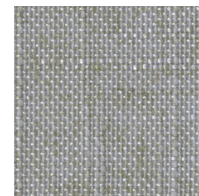
0066



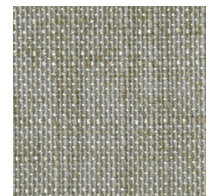
0046



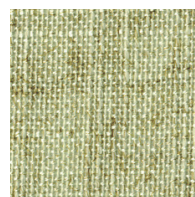
0061



0026



0056



0036