

# SANDSTORM II 101964



**almedahls**

# SANDSTORM II 101964

Almost uni-coloured yet unique, in finely tuned colour combinations, Sandstorm truly wears the Almedahls trademark. The design expression, created by Studio Amanda & Matilda has been a success from the start. Looking at the pattern you can feel the movement of the hand, experiencing a true sense of craftsmanship. The small dots flow organically across the surface making an impression of being swirling in the wind. The light textural design makes Sandstorm fit into different types of environments creating a calm and welcoming atmosphere.

Sandstorm II is printed on a light and airy quality with a delicate transparency. It has soft drape and a smooth handle. The fabric is made of 100% recycled polyester. Inspired by life on the shoreline, the colour range is natural, earthy and soft with an occasional pop of colour.

## PRODUCT INFORMATION

### Design and Material

Design: Studio Amanda & Matilda  
Material: 100% Recycled Polyester FR  
Width: 200 cm (78,8 inch)  
Weight: 90 g/m<sup>2</sup> (2,65 oz/yd<sup>2</sup>)  
Number of colors: 20

### Pattern Features

Repeat: 90  
Turnable design: Yes

### Light Properties

Openness factor: 18%  
Solar value average:  $R_s + A_s = 50$   
Light transmission: Transparent

## PERFORMANCE

### Color Fastness

Light fastness: 4-5  
(ISO 105-B02, scale 1-8)

Color fastness to laundering: 4-5  
(ISO 105-C06, scale 1-5)

### Acoustics

Sound class: E  
SS-EN ISO 354  
Alpha value: 0,15

### Flame Retardant Standard

DIN 4102 (B1)



## WASHING INSTRUCTIONS



Wash with similar colors  
Can be washed at 70°C

Shrinkage: < 2%  
SS-EN ISO 6330+A1

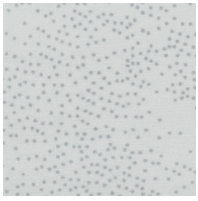
## SUSTAINABILITY

OEKO-TEX® STANDARD 100  
Five Zero Green  
SS-EN ISO 14001:2004  
REACH

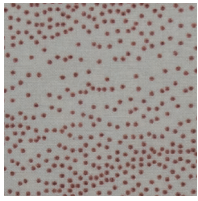


Sandstorm II 101964

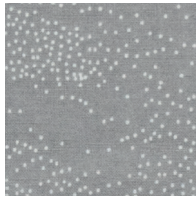
# Colour



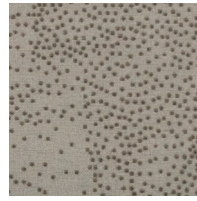
0008



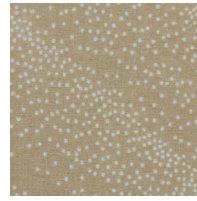
0057



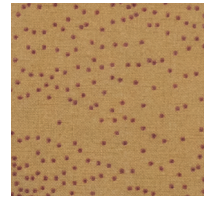
0005



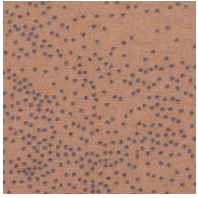
0066



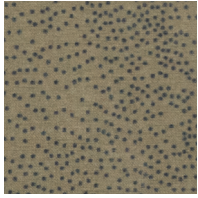
0006



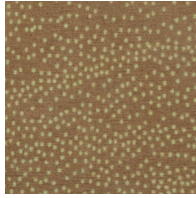
0041



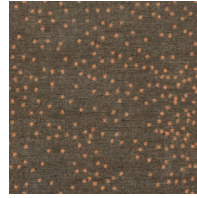
0015



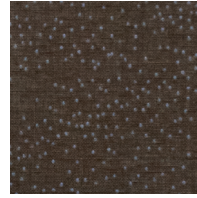
0052



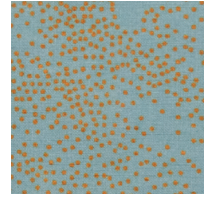
0064



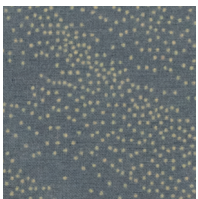
0056



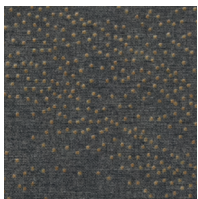
0062



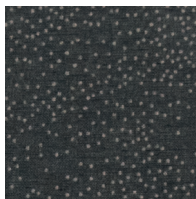
0032



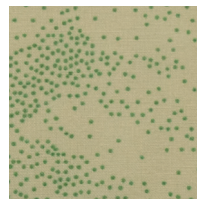
0026



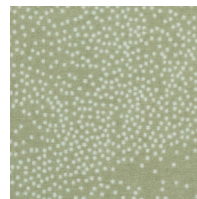
0054



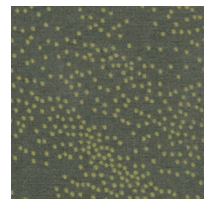
0097



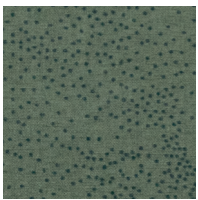
0063



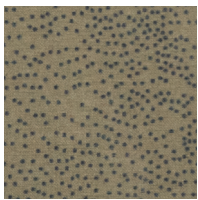
0033



0035



0003



0052