

Suit 101787



almedahls

Suit 101787

The classic and rich herringbone texture combined with mélange yarns gives SUIT a personality all of its own. The colour scale, with 27 options, is inspired by the elements: dry, bristly grass next to white sand on a windy beach; dark rocks meeting a frothy sea; and shades of warm sunset light. Technically, SUIT is a dimout that provides superior acoustic performance with an alpha value of 0.95, light exclusion above 99%, and the flexibility offered by its 3-metre width. SUIT complies with most FR standards, including IMO, and is Oekotex certified.

The textured herringbone surface, combined with the broad, contemporary colour scale and 3-metre width, along with its outstanding acoustic performance with an alpha value of 0.95, make SUIT an excellent choice for various settings.

PRODUCT INFORMATION

Design and Material

Design: Studio Almedahls
Material: 100% Polyester FR
Width: 300 cm (118 inch)
Weight: 360 g/m² (10,62 oz/yd²)
Number of colors: 27

Pattern Features

Repeat: -
Turnable design: Yes

Light Properties

Openness factor:
Solar value average: Rs + As = 100
Light transmission: Dimout

PERFORMANCE

Color Fastness

Light fastness: 5
(ISO 105-B02, scale 1-8)
Color fastness to laundering: 4
(ISO 105-C06, scale 1-5)

Acoustics

Sound class: A
SS-EN ISO 354
Alpha value: 0,95

Flame Retardant Standard

BS 5867 Part 2B
IMO FTP Code 2010 Part 7
NFPA 701 1+2, Classe Uno
NFP 92-503/504/505/507-M1
DIN 4102 (B1)
EN 13773 class 1



WASHING INSTRUCTIONS



Wash with similar colors
Can be washed at 70°C
Shrinkage: < 2%
SS-EN ISO 6330+A1

SUSTAINABILITY

OEKO-TEX® STANDARD 100
Five Zero Green
SS-EN ISO 14001:2004
REACH

OTHER INFO

Hanging fabric in warp direction with using lead weight which has minimum 50g/m is recommended.

Can be used railroaded to create a 3 m drop. Please note the appearance will change depends on which direction fabric hung with.



Suit 101787-0085

Colour



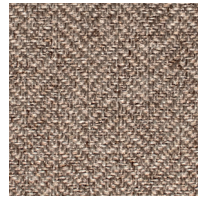
0085



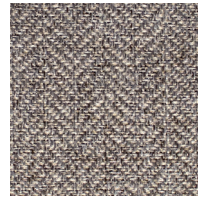
0084



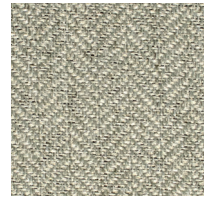
0080



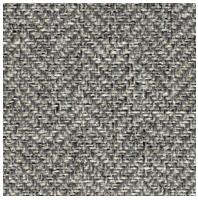
0065



0056



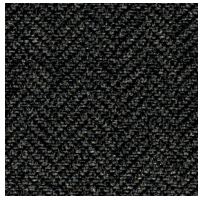
0058



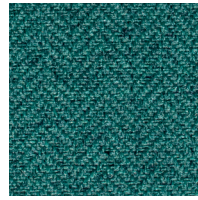
0052



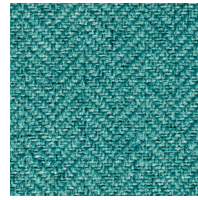
0059



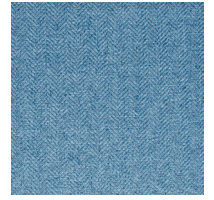
0095



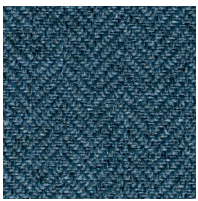
0032



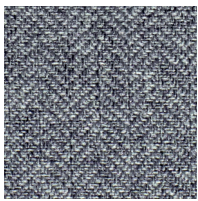
0033



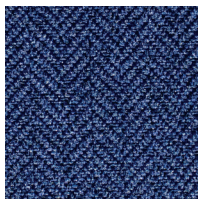
0028



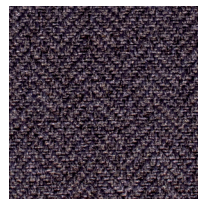
0023



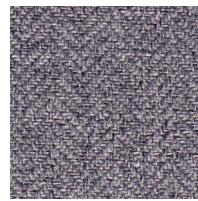
0025



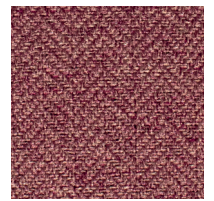
0029



0070



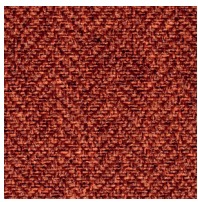
0078



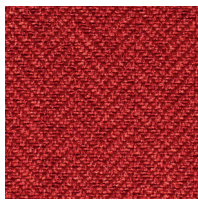
0071



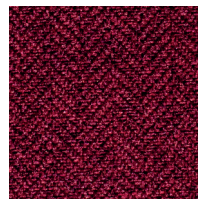
0041



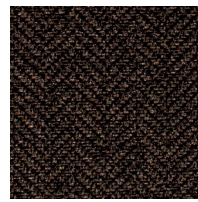
0014



0010



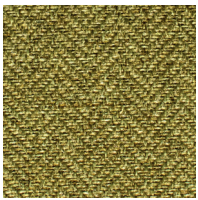
0019



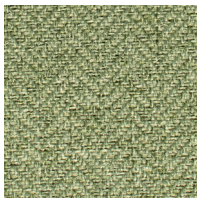
0096



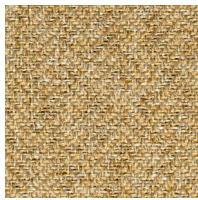
0069



0034



0038



0040