

Tilt 101901



almedahls

Tilt 101901

Tilt is a rich and stylish twill-texture with a slight vintage feel. Yet it is modern and cool adding a distinct character to contemporary environments. The loose, lush weave has a light transparency and an exquisite soft drape. The tactile surface brings a warm energy to the surroundings.

Tilt comes in twelve colours including muted pastels, dark more intense hues and versatile neutrals. The two-toned stripe effect, created by blending three different yarn colours, makes each colourway easy to match with the other colours within the Tilt palette and with other elements in the interior. Although the shades are soft and muted the fabric is still carrying a strong attitude. Tilt brings the perfect balance between playfulness and elegance. Tilt is carefully co-ordinated with our delicate net texture Note, offering possibility to create intriguing interiors by layering function, textures and colours.

PRODUCT INFORMATION

Design and Material

Design: Studio Almedahls
Material: 100% Trevira CS
Width: 310 cm (122 inch)
Weight: 205 g/m² (6 oz/yd²)
Number of colors: 12

Pattern Features

Repeat: -
Turnable design: Yes

Light Properties

Openness factor: 3%
Solar value average: Rs + As = 80
Light transmission: Transparent

PERFORMANCE

Color Fastness

Light fastness: 6
(ISO 105-B02, scale 1-8)
Color fastness to laundering: 4 - 5
(ISO 105-C06, scale 1-5)

Acoustics

Sound class: D
SS-EN ISO 354
Alpha value: 0,35

Flame Retardant Standard

NFPA 701:2010
Classe Uno
NFP 92-503/504/505/507-M1
DIN 4102 (B1)
EN 13773 class 1
BS 5867 Part 2C



WASHING INSTRUCTIONS



Wash with similar colors
Can be washed at 70°C
Shrinkage: < 2%
SS-EN ISO 6330+A1

SUSTAINABILITY

OEKO-TEX® STANDARD 100
Five Zero Green
SS-EN ISO 14001:2004
REACH

OTHER INFO

Can be used railroaded to create ≈ 2,80 m drop.
Please note the direction of the fabric. Appearance will slightly change when the fabric is turned.

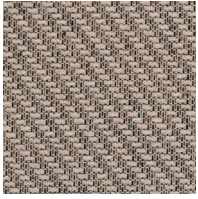


Tilt 101901-0035

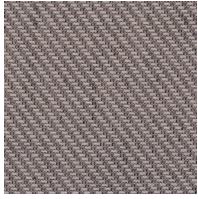


0 97-059
RISE

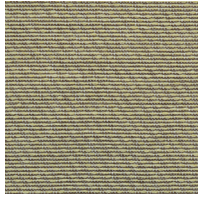
Colour



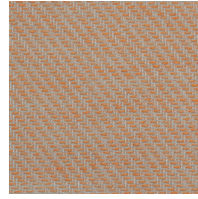
0015



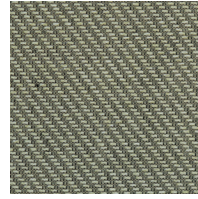
0075



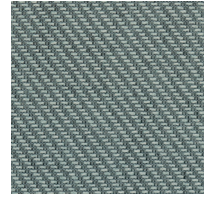
0046



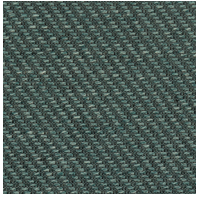
0048



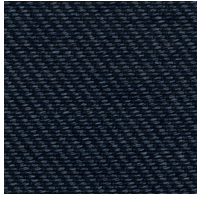
0043



0035



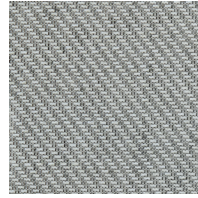
0032



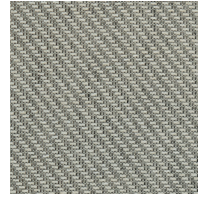
0022



0008



0055



0056



0009