

Velvet 101606



almedahls

Velvet 101606

Velvet is not just another velvet fabric. Apart from being soft, luxurious, and elegant, it is very densely woven with a short pile, ensuring an even surface. The fabric has a beautiful drape, is easy to maintain, and works in various environments for both curtain and upholstery applications. Technically, Velvet has a very good abrasion resistance of 50,000 Martindale and excellent sound absorption properties with an alpha value of 0.65. The colour palette has a warm and natural feel with a good balance between light and dark, cold and warm, soft and muted tones.

The fabric's dense structure ensures excellent sound absorption and abrasion resistance, combined with a soft surface, heavy drape, and a muted, natural palette that is part of the colour-coordinated Texture Concept.

PRODUCT INFORMATION

Design and Material

Design: Studio Almedahls
Material: 100% Polyester FR
Width: 140 cm (55,1 inch)
Weight: 345 g/m² (10,18 oz/yd²)
Number of colors: 14

Pattern Features

Repeat: -
Turnable design: Yes

Light Properties

Openness factor: 0%
Solar value average: Rs + As = 90
Light transmission: Translucent

PERFORMANCE

Color Fastness

Light fastness: 5- 6
(ISO 105-B02, scale 1-8)

Color fastness to laundering: 4- 5
(ISO 105-C06, scale 1-5)

Acoustics

Sound class: C
SS-EN ISO 354
Alpha value: 0,65

Flame Retardant Standard

NFP 92-503/504/505/507-M1
IMO FTP Code 307 part 8
DIN 4102 (B1)



WASHING INSTRUCTIONS



Wash with similar colors
Can be washed at 70°C

Shrinkage: < 1%
SS-EN ISO 6330+A1

SUSTAINABILITY

Five Zero Green
SS-EN ISO 14001:2004
REACH

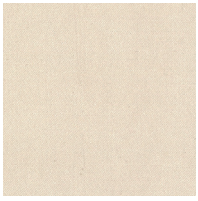


FIVEZEROGREEN

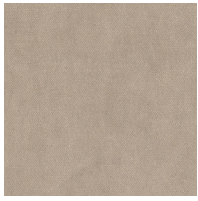


Velvet 101606

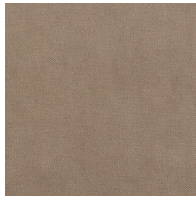
Colour



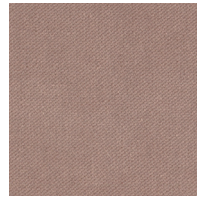
0008



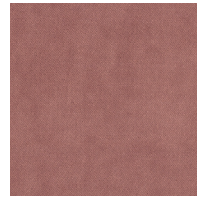
0086



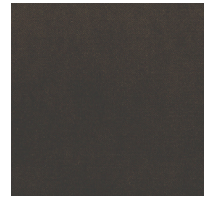
0053



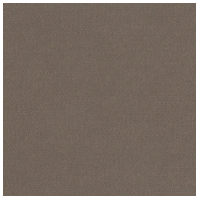
0061



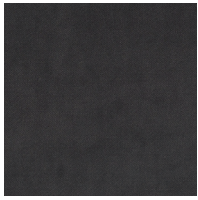
0016



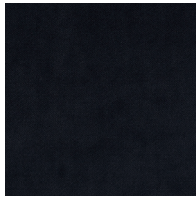
0055



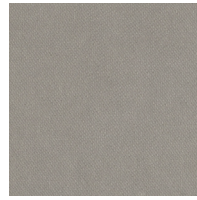
0056



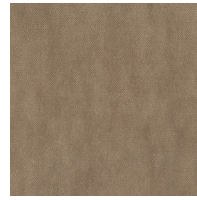
0065



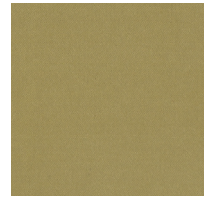
0029



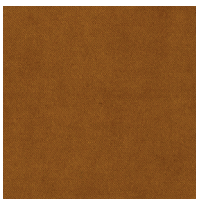
0025



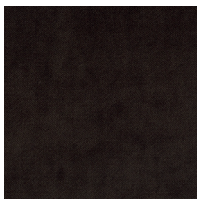
0064



0036



0041



0059