

**Wide 100217**



**almedahls**



# Wide 100217

Wide is an unpretentious and versatile base fabric. A wide colour range on a fabric that is extra wide makes creating a room easy. The variety of colours allows for the creation of both soft and serene areas as well as more intense and vibrant interiors. The transparent and slightly textured fabric adds life to the overall expression.

The extra-wide fabric is ideal for large windows or as a room divider, with its transparency and structure providing a dynamic look, and the broad colour palette offering endless possibilities for shaping the character of any room.

## PRODUCT INFORMATION

### Design and Material

**Design:** Studio Almedahls,  
Johanna Lundgren  
**Material:** 100% Trevira CS  
**Width:** 340 cm (134 inch)  
**Weight:** 130 g/m<sup>2</sup> (4,5 oz/yd<sup>2</sup>)  
**Number of colors:** 25

### Pattern Features

**Repeat:** -  
**Turnable design:** Yes

### Light Properties

**Openness factor:** 19%  
**Solar value average:** Rs + As = 55  
**Light transmission:**

## PERFORMANCE

### Color Fastness

**Light fastness:** 6 - 7  
(ISO 105-B02, scale 1-8)

**Color fastness to laundering:** 4 - 5  
(ISO 105-C06, scale 1-5)

### Acoustics

**Sound class:** 0,1  
SS-EN ISO 354  
**Alpha value:** 0,1

### Flame Retardant Standard

DIN 4102 (B1)  
EN 13773 class 1



## WASHING INSTRUCTIONS



Wash with similar colors  
Can be washed at 70°C

**Shrinkage:** < 2%  
SS-EN ISO 6330+A1

## SUSTAINABILITY

OEKO-TEX® STANDARD 100  
Five Zero Green  
SS-EN ISO 14001:2004  
REACH

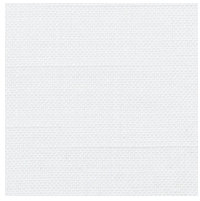
## OTHER INFO

Can be used railroaded to create a 3 m drop

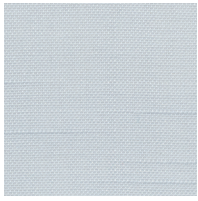


Wide 100217

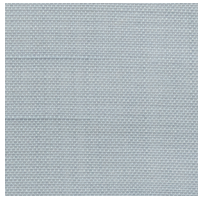
# Colour



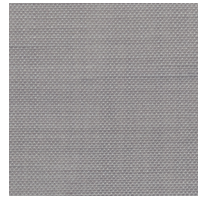
0080



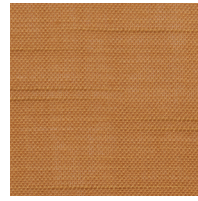
0050



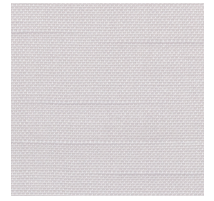
0055



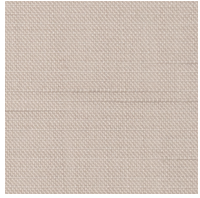
0059



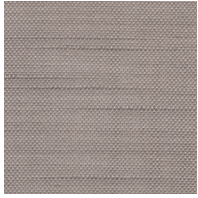
0046



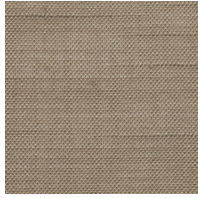
0060



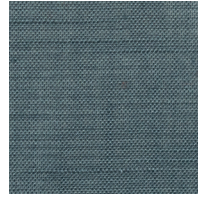
0066



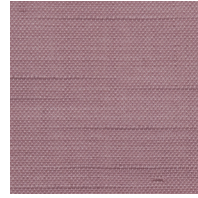
0065



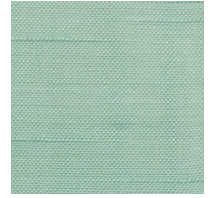
0069



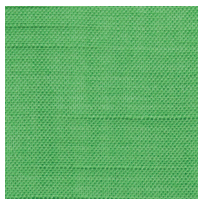
0090



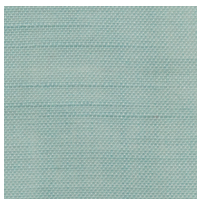
0070



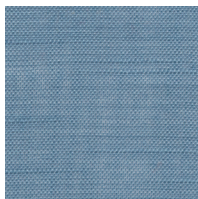
0039



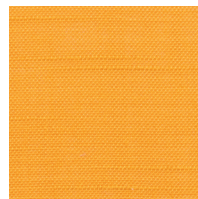
0033



0082



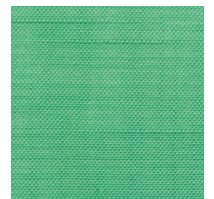
0020



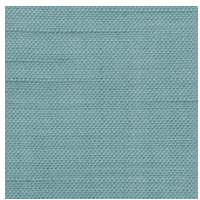
0040



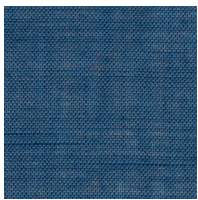
0034



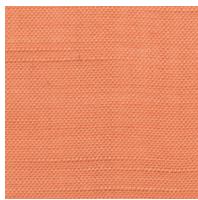
0023



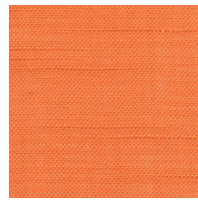
0032



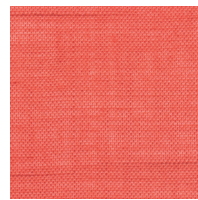
0022



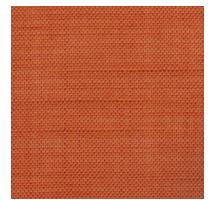
0016



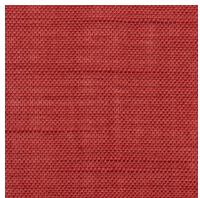
0041



0011



0014



0017