

ALMA 101985



almedahls

ALMA 101985

ALMA is a sheer curtain fabric with a broad and rich color palette. The wide selection of neutrals is complemented by a shimmering range of tones, from soft pastels to deep, saturated hues, offering the perfect shade for any interior. The matte linen structure, enhanced with white effect threads, creates a vibrant texture.

ALMA is exceptionally smooth and pliable, giving a relaxed and fluid impression. The soft, hazy texture gently filters light, creating a warm and calming atmosphere. Available in 40 shades, ALMA is part of our Well-being Concepts, focusing on Hygiene, Acoustics, and Daylight management.

ALMA is also supported by our sustainability-validated value chain, which is audited by EcoVadis.

PRODUCT INFORMATION

Design and Material

Design: Studio Almedahls
Material: 70% Polyester / 30% Linen
Width: 300 cm (118.11 inch)
Weight: 100g/m² (2.95 oz/yd²)
Number of colours: 40

Pattern Features

Repeat: -
Turnable Design: Yes

Light Properties

Openness factor: 22%
Solar value average: Rs + As = 50
Light transmission: Transparent

PERFORMANCE

Colour Fastness

Light fastness: 5 - 6
(ISO 105-B02, scale 1-8)
Colour fastness to laundering: 4 - 5
(ISO 105-C06, scale 1-5)

Acoustics

Sound class: E
SS-EN ISO 354
Alpha value: 0.15

Flame Retardant Standard

-

WASHING INSTRUCTIONS



Wash with similar colours
Can be washed at 70°C
Shrinkage: < 2%
SS-EN ISO 6330+A1

SUSTAINABILITY

OEKO-TEX® STANDARD 100
Five Zero Green
SS-EN ISO 14001:2004
REACH

OTHER INFO

Can be used railroaded to
create ≈ 2,75m drop



ALMA 101985-0604

Colour



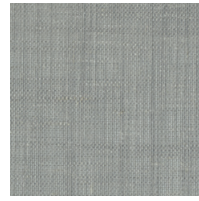
0088



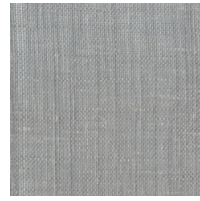
0008



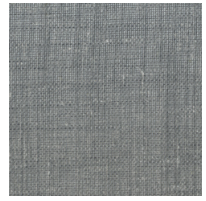
0506



0503



0505



0502



0509



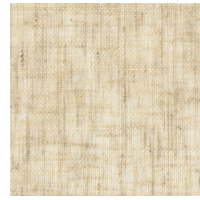
0535



0605



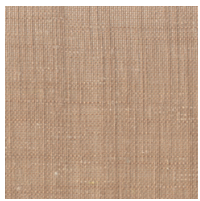
0606



0000



0501



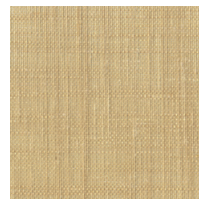
0601



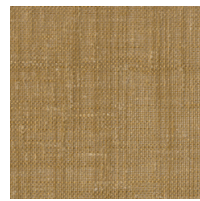
0616



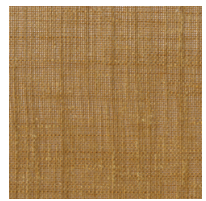
0603



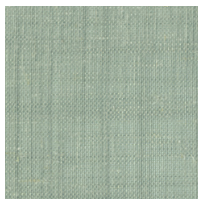
0604



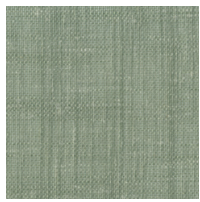
0436



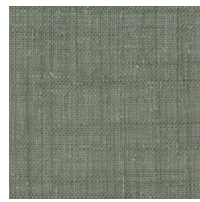
0406



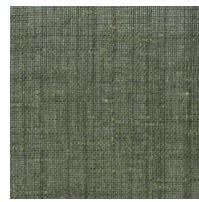
0205



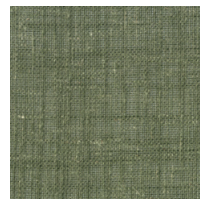
0305



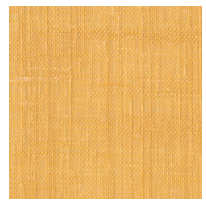
0355



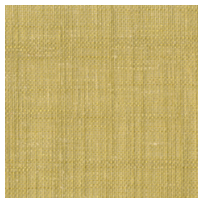
0356



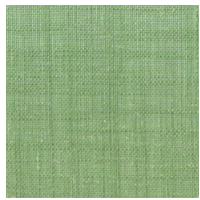
0366



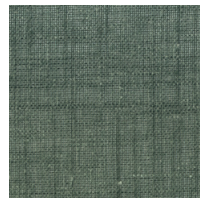
0404



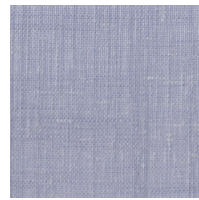
0433



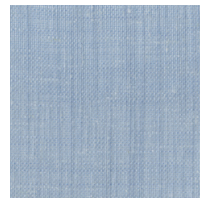
0303



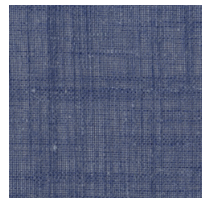
0302



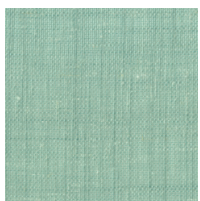
0701



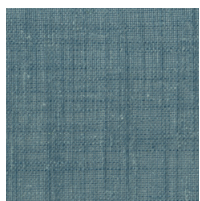
0202



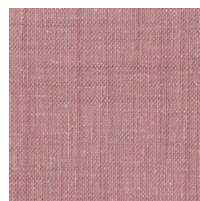
0220



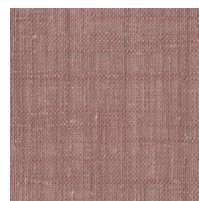
0203



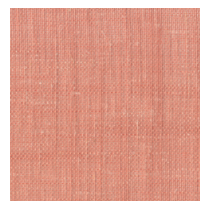
0223



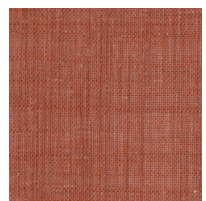
0107



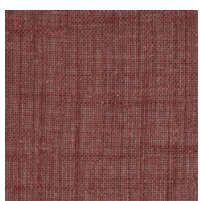
0105



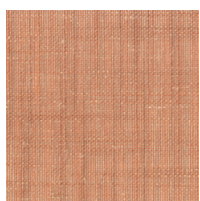
0101



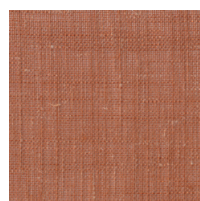
0104



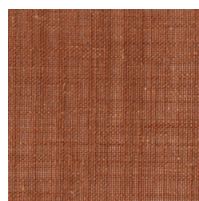
0102



0114



0144



0146