

EARTH 101604



almedahls

EARTH 101604

EARTH is a sophisticated textile with a timeless expression. Its warm ambiance and subtle lustre evoke the feel of a classic wool curtain. The weave has a fine texture and a tonal mélangé effect in the weft direction. The drape is soft and elegant. EARTH features a limited but versatile colour palette of muted, slightly tinted neutrals, making it easy to adapt to many environments. The 330 cm wide fabric is perfect for creating large-scale, seamless curtain applications.

The subtle, tonal mélangé effect, the versatile 330 cm wide fabric, and the muted, natural palette, which is part of the colour-coordinated Texture Concept, make EARTH an excellent choice for various settings.

PRODUCT INFORMATION

Design and Material

Design: Studio Almedahls
Material: 100% Trevira CS
Width: 330 cm (129.92 inch)
Weight: 165 g/m² (4.87 oz/yd²)
Number of colours: 7

Pattern Features

Repeat: -
Turnable design: Yes

Light Properties

Openness factor: 11%
Solar value average: Rs + As = 65
Light transmission: Transparent

PERFORMANCE

Colour Fastness

Light fastness: 5
(ISO 105-B02, scale 1-8)
Colour fastness to laundering: 4 - 5
(ISO 105-C06, scale 1-5)

Acoustics

Sound class: E
SS-EN ISO 354
Alpha value: 0,20

Flame Retardant Standard

DIN 4102 (B1)



WASHING INSTRUCTIONS



Wash with similar colours
Can be washed at 70°C
Shrinkage: < 2%
SS-EN ISO 6330+A1

SUSTAINABILITY

OEKO-TEX® STANDARD 100
Five Zero Green
SS-EN ISO 14001:2004
REACH

OTHER INFO

Can be used railroaded to create a 3 m drop. Please note the direction of the fabric. Appearance will change when fabric is turned.



EARTH 101604-0085

Colour



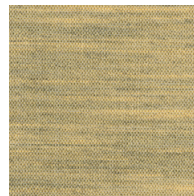
0085



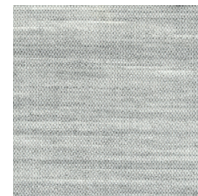
0060



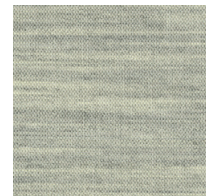
0065



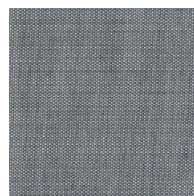
0045



0025



0035



0022

almedahls