

MOON 101603



almedahls

MOON 101603

MOON is a dimout with coarse natural texture at the front of the fabric while the back is smooth with a slight lustre. The fabric has a soft and heavy drape. The width of the fabric offers the possibility of using it railroaded to create seamless hanging in large windows. Apart from the room darkening function, the fabric also has good sound absorption properties. MOON comes in a mix of six versatile neutrals, perfect for a calm and natural setting.

The dimout fabric's textured surface, its generous 300 cm width, and the muted, natural palette, which is part of the colour-coordinated Texture Concept, make it an ideal choice for creating serene and harmonious interiors.

PRODUCT INFORMATION

Design and Material

Design: Studio Almedahls
Material: 100% Polyester FR
Width: 300 cm (118.11 inch)
Weight: 285 g/m² (8.41 oz/yd²)
Number of colours: 6

Pattern Features

Repeat: -
Turnable design: Yes

Light Properties

Openness factor: Dimout
Solar value average: Rs + As = 100
Light transmission: Dimout

PERFORMANCE

Colour Fastness

Light fastness: 3-4
(ISO 105-B02, scale 1-8)

Colour fastness to laundering: 3-4
(ISO 105-C06, scale 1-5)

Acoustics

Sound class: C
SS-EN ISO 354
Alpha value: 0,7

Flame Retardant Standard

Classe 1



WASHING INSTRUCTIONS



Wash with similar colours
Can be washed at 70°C

Shrinkage: < 2%
SS-EN ISO 6330+A1

SUSTAINABILITY

OEKO-TEX® STANDARD 100
Five Zero Green
SS-EN ISO 14001:2004
REACH

OTHER INFO

Turnable design. Can be used railroaded to create a 3 m drop

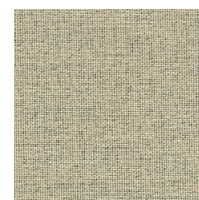


MOON 101603

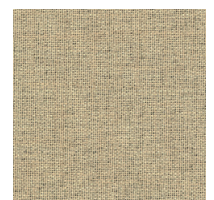
Colour



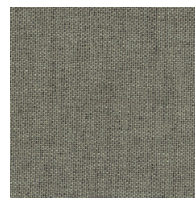
0083



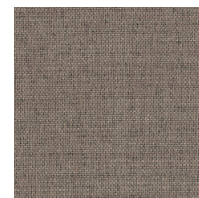
0008



0084



0055



0065



0066