

RAMIE 101855



almedahls

RAMIE 101855

When creating RAMIE our designers explored the moods of the seasons in our natural habitat, the Nordic landscape. Taking inspiration from the layers of nature, of scents, temperatures, sounds, textures, light and colours. The result is a true celebration of craft, material and tactility. The timeless, textural RAMIE print is intricately combined with the linen-like fabric structure, creating a layering effect that amplifies the materiality of the design.

The colour palette includes soft, melancholic pastels inspired by the circularity of the seasons. The blend of three thoughtfully combined colours in each colourway gives several possibilities to match with other curtains from the Almedahls curtain collection.

The base fabric is made of 75% recycled polyester from post-consumer PET-bottles and post-industrial fibre waste which significantly reduces water and energy consumption and greenhouse gas emissions in the manufacturing process.

PRODUCT INFORMATION

Design and Material

Design: Studio Almedahls
Material: 75% Recycled polyester
25% Polyester FR
Width: 300 cm (118.11 inch)
Weight: 215 g/m² (6.34 oz/yd²)
Number of colours: 10

Pattern Features

Repeat: -
Turnable design: Yes

Light Properties

Openness factor: 7%
Solar value average: Rs + As = 65
Light transmission: Transparent

PERFORMANCE

Colour Fastness

Light fastness: 5 - 6
(ISO 105-B02, scale 1-8)
Colour fastness to laundering: 4 - 5
(ISO 105-C06, scale 1-5)

Acoustics

Sound class: D
SS-EN ISO 354
Alpha value: 0.30

Flame Retardant Standard

DIN 4102 (B1)



WASHING INSTRUCTIONS



Wash with similar colours
Can be washed at 70°C
Shrinkage: < 2%
SS-EN ISO 6330+A1

SUSTAINABILITY

OEKO-TEX® STANDARD 100
Five Zero Green
SS-EN ISO 14001:2004
REACH

OTHER INFO

Can be used railroaded to create a 2,75 m drop



FIVEZEROGREEN



STANDARD 100



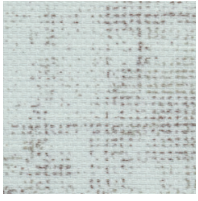
0 97-059 RISE



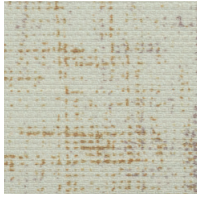
RAMIE 101855-0061

almedahls

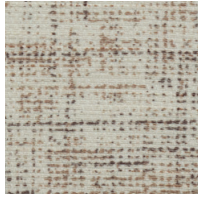
Colour



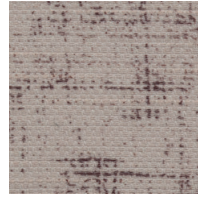
0086



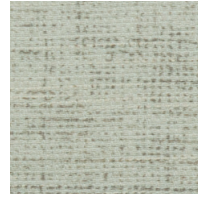
0041



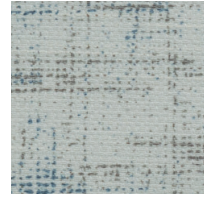
0061



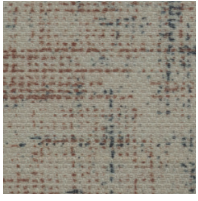
0018



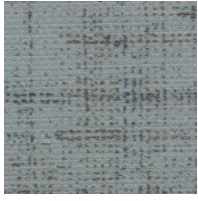
0064



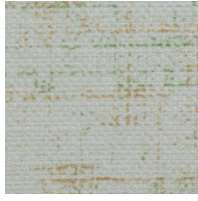
0025



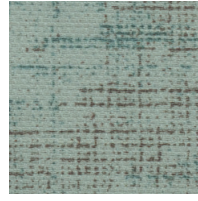
0062



0026



0043



0035