

# SHINE 100215



**almedahls**

# SHINE 100215

SHINE is a wide, ultra-sheer weave with a discreet texture. The slightly shiny lustre catches the light in a beautiful way, enhancing its presence in the room. The airy fabric has a lovely, floaty movement. It is unpretentious and flexible, making it suitable for many applications. The versatile colour scheme ranges from muted naturals like beige and grey to lively, vibrant tones such as sunny yellow, tangerine, and ocean blues, all of which are transformed into soft pastel hues when transmitting light.

The lustrous weave beautifully carries the light, combined with the floating movement of the fabric. Its 330 cm width provides seamless hanging in large-scale windows, and the fabric is delivered with a weight tape for perfect draping.

## PRODUCT INFORMATION

### Design and Material

Design: Studio Almedahls  
Material: 100% Trevira CS  
Width: 330 cm (29.92 inch)  
Weight: 50 g/m<sup>2</sup> (1.47 oz/yd<sup>2</sup>)  
Number of colours: 14

### Pattern Features

Repeat: -  
Turnable design: Yes

### Light Properties

Openness factor: 31%  
Solar value average: Rs + As = 40  
Light transmission: Transparent

## PERFORMANCE

### Colour Fastness

Light fastness:  
(ISO 105-B02, scale 1-8) 4-6  
Colour fastness to  
laundry: 4-5  
(ISO 105-C06, scale 1-5)

### Acoustics

Sound class: -  
SS-EN ISO 354  
Alpha value: -

### Flame Retardant Standard

IMP FTP Code part 7  
NFP92-503/504/505/507-M1  
DIN 4102 (B1)



## WASHING INSTRUCTIONS



Wash with similar colours  
Can be washed at 70°C  
Shrinkage: < 2%  
SS-EN ISO 6330+A1

## SUSTAINABILITY

OEKO-TEX® STANDARD 100  
Five Zero Green  
SS-EN ISO 14001:2004  
REACH

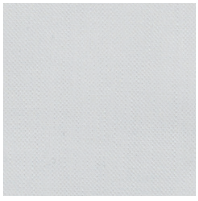
## OTHER INFO

Can be used railroaded to create a 3 m drop  
This fabric is delivered with weight tape

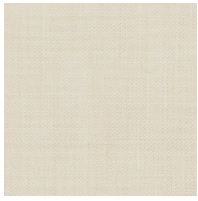


SHINE 100215

# Colour



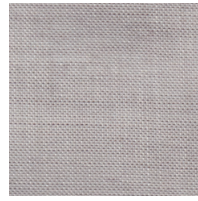
0086



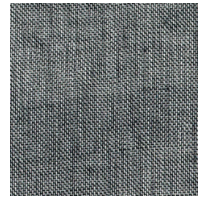
0068



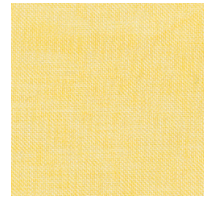
0006



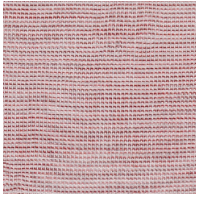
0005



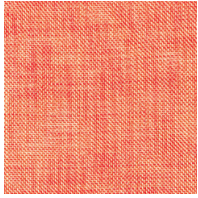
0059



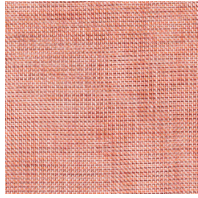
0004



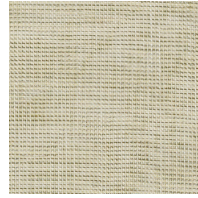
0015



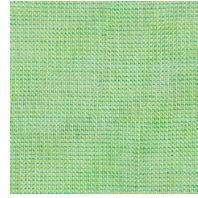
0014



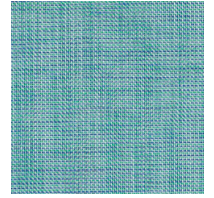
0011



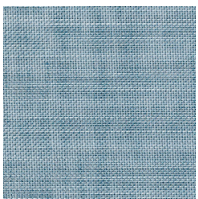
0036



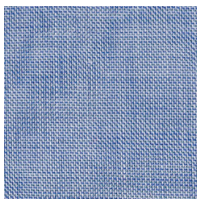
0038



0023



0032



0002