

**SOLVEIG 101966**



**almedahls**

# SOLVEIG 101966

SOLVEIG is a curtain with a modest, slightly striped structure and a smooth, matte surface. The soft and pliable quality creates a beautiful drape. The dense fabric provides privacy which makes it suitable for room dividers, while being semi-transparent and letting the daylight through.

## PRODUCT INFORMATION

### Design and Material

Design: Studio Almedahls  
Material: 100% Polyester  
Width: 310cm (122.05 inch)  
Weight: 215g/m<sup>2</sup> (6.34 oz/yd<sup>2</sup>)  
Number of colours: 5

### Pattern Features

Repeat: -  
Turnable design: Yes

### Light Properties

Openness factor: 2%  
Solar value average: Rs + As = 75  
Light transmission: Translucent

## PERFORMANCE

### Colour Fastness

Light fastness: 6  
(ISO 105-B02, scale 1-8)  
Colour fastness to laundering: 4-5  
(ISO 105-C06, scale 1-5)

### Acoustics

Sound class: SS-EN ISO 354  
Alpha value:

### Flame Retardant Standard

-

## WASHING INSTRUCTIONS



Wash with similar colours  
Can be washed at 70°C

Shrinkage: < 2%  
SS-EN ISO 6330+A1

## SUSTAINABILITY

OEKO-TEX® STANDARD 100  
Five Zero Green  
SS-EN ISO 14001:2004  
REACH

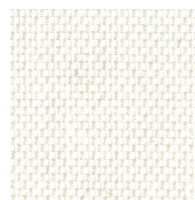
## OTHER INFO

Can be used railroaded to create ≈ 2,85m drop.

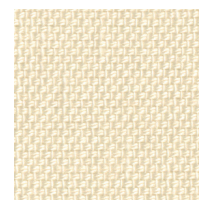


SOLVEIG 101966-0008

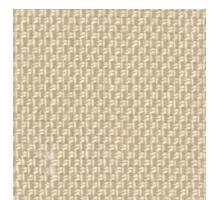
## Colour



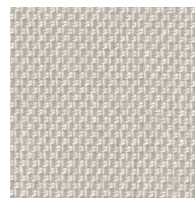
0008



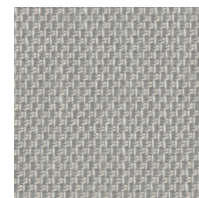
0086



0060



0050



0055

almedahls