

WILDFLOWER 101721



almedahls

WILDFLOWER 101721

WILDFLOWER is an imaginative flower meadow that spreads freely across the width of the fabric. It is printed on our satin base fabric, a dense weave with a smooth surface and a subtle lustre. The close weave construction ensures glare control, and the fabric is tested for sound absorption, achieving class C, which is a good acoustic value. The carefully considered colour combinations are designed to easily coordinate with our wide selection of uni-coloured fabrics.

The hand-drawn, dynamic textures in the design, the class C sound absorption value, and the subtle lustre of the satin weave make WILDFLOWER a perfect choice for various settings.

PRODUCT INFORMATION

Design and Material

Design: Studio Almedahls
Essy Winnerholt

Material: 100% Trevira CS

Width: 140 cm (55.12 inch)

Weight: 190 g/m² (5,60 oz/yd²)

Number of colours: 6

Pattern Features

Repeat: 90 cm (35 inch)

Turnable design: Yes

Light Properties

Openness factor: 1%

Solar value average: Rs + As = 70

Light transmission: Translucent

PERFORMANCE

Colour Fastness

Light fastness: 4 - 5
(ISO 105-B02, scale 1-8)

Colour fastness to laundering: 4 - 5
(ISO 105-C06, scale 1-5)

Acoustics

Sound class: C
SS-EN ISO 354

Alpha value: 0,6

Flame Retardant Standard

IMO 2010 FTP Code part 7
NT Fire 43 Class1



WASHING INSTRUCTIONS



Wash with similar colours

Can be washed at 70°C

Shrinkage: < 2%
SS-EN ISO 6330+A1

SUSTAINABILITY

OEKO-TEX® STANDARD 100

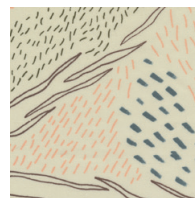
Five Zero Green

SS-EN ISO 14001:2004

REACH



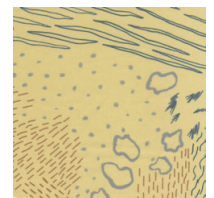
Colour



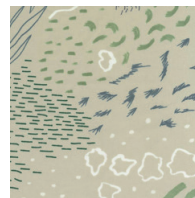
0066



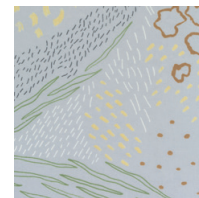
0013



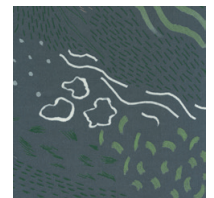
0045



0063



0054



0023