

**MINGLE 102043**



**almedahls**

# MINGLE 102043

MINGLE is a versatile, lightweight plain weave with a soft drape and a beautifully balanced transparency. Positioned between our popular SHADE and PANORAMA II, it allows natural light to filter through while maintaining a sense of privacy. The carefully curated colour palette draws inspiration from nature, offering soft neutrals, warm earth tones, calming greens and blues, and accents of lilac and burgundy. By combining different warp and weft colours, MINGLE gains a vibrant, subtly shimmering surface that enhances its refined simplicity. Flame-retardant and semi-transparent, MINGLE has a weight of 150 g/m<sup>2</sup> and a generous 305 cm width, making it ideal for diverse interiors. Available in 30 colours, it is composed of 44% Trevira CS Eco and 56% Trevira CS.

MINGLE is part of our Acoustics-, Hygiene-, Daylight-, and Sustainability concepts, bringing both beauty and function to public spaces.

## PRODUCT INFORMATION

### Design and Material

**Design:** Studio Almedahls

**Material:** 56% Trevira CS  
44% Trevira CS Eco

**Width:** 305 cm (120,08 inch)

**Weight:** 150 g/m<sup>2</sup> (4,42 oz/yd<sup>2</sup>)

**Number of colours:** 30

### Pattern Features

**Repeat:** 0 cm

**Turnable design:** Yes

### Light Properties

**Openness factor:** 4%

**Solar value average:** Rs + As = 68

**Light transmission:** Transparent

## PERFORMANCE

### Color Fastness

**Light fastness:** 6  
(ISO 105-B02, scale 1-8)

**Color fastness to laundering:** 4-5  
(ISO 105-C06, scale 1-5)

### Acoustics

**Sound class:** D  
SS-EN ISO 354

**Alpha value:** 0,35

### Flame Retardant Standard

DIN 4102-1 class B1  
EN 13773 class 1  
NFPA701  
NFP 92-503/504/505/507-M1



## WASHING INSTRUCTIONS



Wash with similar colors  
Can be washed at 70°C

**Shrinkage:** < 2%  
SS-EN ISO 6330+A1

## SUSTAINABILITY

OEKO-TEX® STANDARD 100  
Five Zero Green  
SS-EN ISO 14001:2004  
REACH

## OTHER INFO

Wide width fabric. Can be used railroaded.



MINGLE 02043-0365

**almedahls**



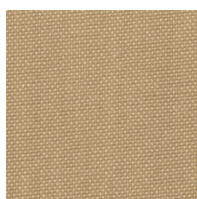
## Colour



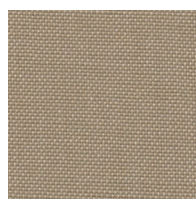
0008



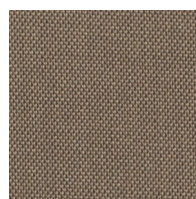
0006



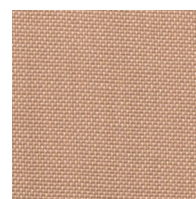
0066



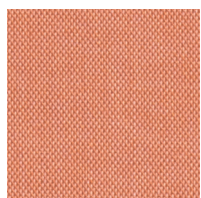
0065



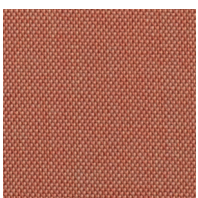
0655



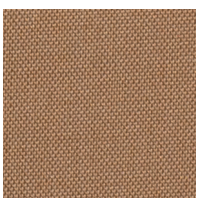
0015



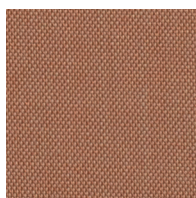
0068



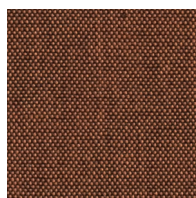
0016



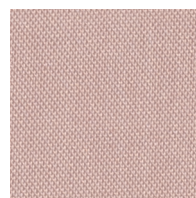
0646



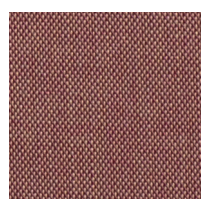
0606



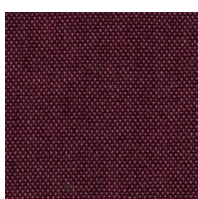
0069



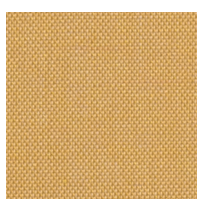
0078



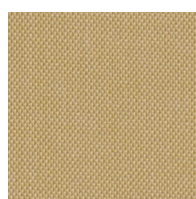
0076



0079



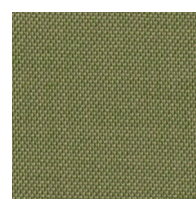
0048



0438



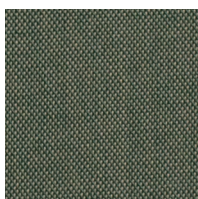
0038



0036



0039



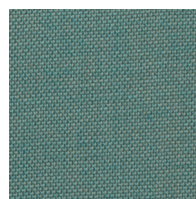
0033



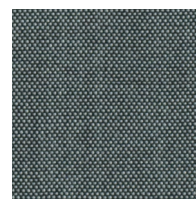
0365



0362



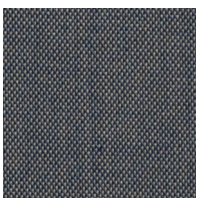
0236



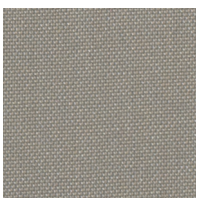
0052



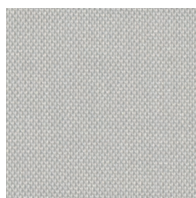
0022



0026



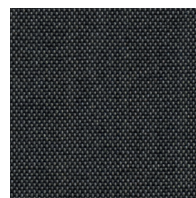
0056



0058



0055



0095