

BAST 100146



almedahls

BAST 100146

BAST is a heavy textile with a unique woven texture and a soft, tactile surface that creates a beautiful, flowing drape. The fabric's weight provides excellent sound absorption and enhances privacy, making it ideal for public spaces and interiors where calm and comfort are key.

The broad colour palette includes both grounded neutrals and deep, saturated tones — offering endless possibilities for combining with prints and plains from the Almedahls collection.

PRODUCT INFORMATION

Design and Material

Design: Studio Almedahls
Material: 100% Polyester Trevira CS
Width: 140 cm (55.12 inch)
Weight: 260g/m² (7.67 oz/yd²)
Number of colours: 31

Pattern Features

Repeat: -
Turnable design: Yes

Light Properties

Openness factor: 0%
Solar value average: Rs + As = 80
Light transmission: Translucent

PERFORMANCE

Colour Fastness

Light fastness: 5-6
(ISO 105-B02, scale 1-8)
Colour fastness to laundering: 4-5
(ISO 105-C06, scale 1-5)

Acoustics

Sound class: C
SS-EN ISO 354
Alpha value: 0.6

Flame Retardant Standard

IMO 2010 FTP Code part 7
NT Fire 43 Class1



WASHING INSTRUCTIONS



Wash with similar colours
Can be washed at 70°C

Shrinkage: < 2%
SS-EN ISO 6330+A1

SUSTAINABILITY

OEKO-TEX® STANDARD 100
Five Zero Green
SS-EN ISO 14001:2004
REACH

OTHER INFO

The turnable fabric provides possibility to create a valance



BAST 100146 -0052

almedahls

Colour



0008



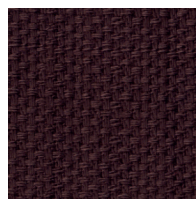
0006



0053



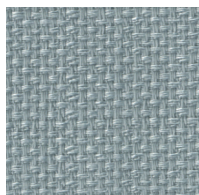
0066



0069



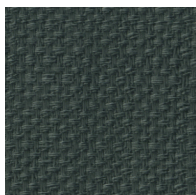
0005



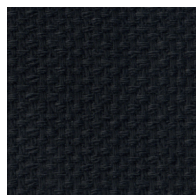
0052



0055



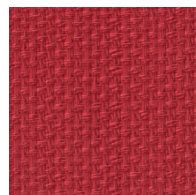
0059



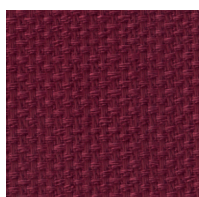
0009



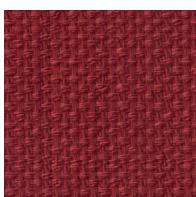
0051



0012



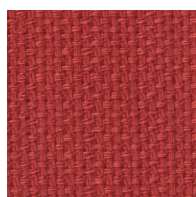
0017



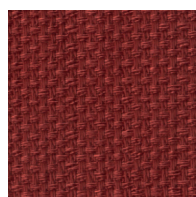
0010



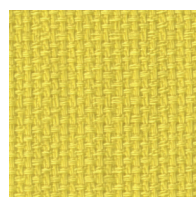
0001



0011



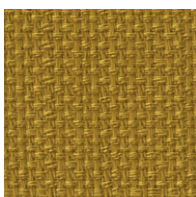
0016



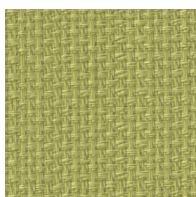
0004



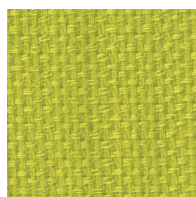
0046



0044



0003



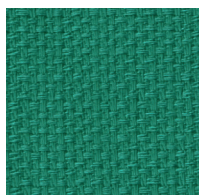
0034



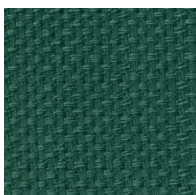
0033



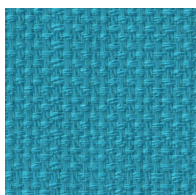
0036



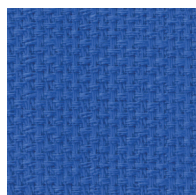
0032



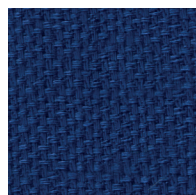
0039



0023



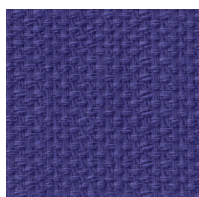
0022



0002



0029



0007